

Chapter 6.0 Community Facilities and Services

6.1 Introduction

Services and facilities provided by local government are vital elements of a community's progress and well-being. Services include police and fire protection, water and wastewater systems, street and park maintenance and operations, and solid waste disposal. Community facilities include government buildings, schools, hospitals, marinas, parks, and maintenance and storage facilities. As a part of the Master Plan, Ishpeming's services and facilities are described and evaluated as to their present condition and adequacy to meet present and future needs of the City. Communities around the Upper Peninsula are facing many economic challenges. Current budget constraints limit numerous City departments; from downtown parking enforcement to library operations. Innovative and responsible spending techniques will be necessary to continue to provide a high level of services with reduced funding.

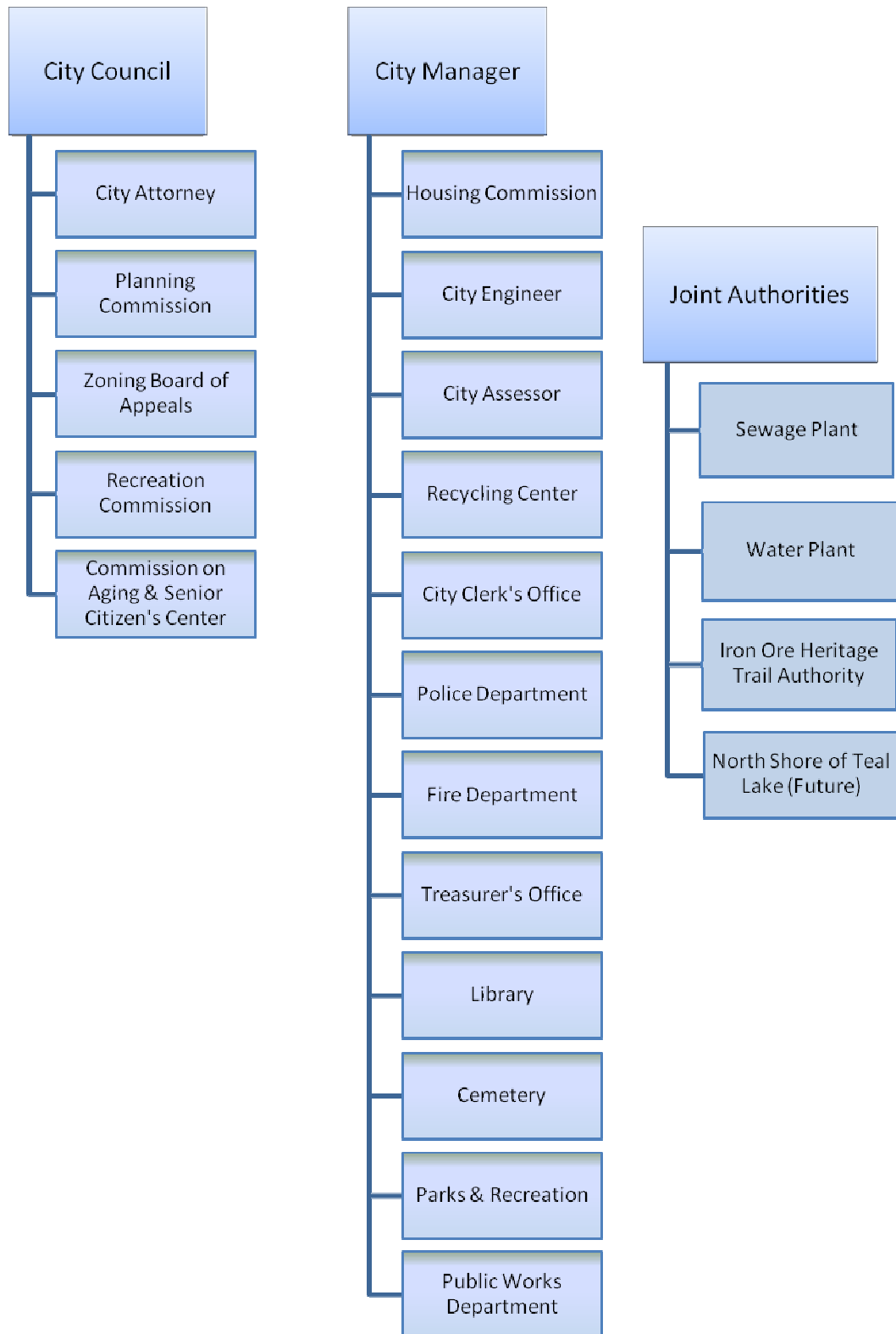
6.2 City of Ishpeming Organizational Structure

City departments, boards and commissions include: a Planning Commission, Zoning Board of Appeals, Parks and Recreation Commission, Cemetery Board, Library Board, Housing Commission, Act 345 Board, Downtown Development Authority, Commission on Aging, Economic Development Corporation, Wastewater Treatment Board, Water Authority, Compensation Commission and Rental Inspection Board exist as appointive bodies and make recommendations to the City Council and City Manager, but independent of the City Council.

The City currently employs 43 full-time and numerous part-time people. The Parks and Recreation Department and the Department of Public Works are responsible for the maintenance and improvement of over 450 acres of land.

Figure 6-1 shows the City of Ishpeming's organizational chart.

Figure 6-1
City of Ishpeming Organizational Chart



6.3 City Facilities and Services

City Hall

City Hall is located in historic downtown Ishpeming at 100 East Division Street. City Hall was built in 1891 on the southeast corner of Main and Division Streets. The City Council met in City Hall for the first time in November of 1891 and a dedication of the building was held at that time. Over the years, several structural upgrades were required. In the summer of 2001, City Hall was renovated once again. The exterior of City Hall was remodeled as well as the interior, including a new roof, heating system and multiple upgrades to the building to meet ADA standards.

City Hall houses the offices of the Assessor, City Attorney, City Clerk, City Manager, City Treasurer, Zoning Administrator and Rental Inspector. Monthly City Council meetings are held at the Ishpeming Senior Center due to the building being handicapped accessible. Elections are held at the schools and the Senior Center. Special meetings are held upstairs in the City Hall conference rooms.

Police Department

The Ishpeming Police Department is located at 100 South Lake Street in downtown Ishpeming. The Police Department was originally located in City Hall. The building the Police Department is currently housed in was constructed in 1917 and is shared jointly with the Ishpeming Volunteer Fire Department. There are currently 10 full and part-time officers that provide 24 hour protection. Four patrol cars are used by the department.

All dispatch is handled by the County Dispatch located at the Michigan State Police Post in Negaunee. Ishpeming police officers are not assigned firefighting duties.

Fire Department

The Ishpeming Volunteer Fire Department was organized in March of 1880. Fire protection services are currently provided by a staff of 28 volunteer firefighters and one fire chief that are paid on call. The Fire Department shares the facility at 100 South Lake Street with the Police Department. Ishpeming's original fire hall was built in 1874 and was located on the west side of First Street. The department moved to the current facility in 1917. The Ishpeming Fire Department utilizes a 1995 Pierce 1250 GPM pumper truck, a 2005 Pierce 1250 GPM pumper truck, 1978 Dodge mini-pumper and a 1982 FMC 1000 GPM pumper truck.

The adequacy of fire protection is evaluated by ISO through the use of the Grading Schedule for Municipal Fire Protection. The schedule provides criteria to be used by insurance grading engineers in classifying the fire defenses and physical conditions of

municipalities. Grading obtained under the schedule is used throughout the United States in establishing base rates for fire insurance. While ISO does not presume to dictate the level of fire protection services that should be provided by a municipality, the findings of its Municipal Survey Office are frequently used by municipal officials in planning improvements to their fire fighting services. The grading is obtained by ISO based upon analysis of fire department equipment, alarm systems, water supply, fire prevention programs, building construction, and distance of potential hazard areas (such as the central business district) from fire station.

The City's assigned fire insurance rating is a six rating as determined by the Insurance Service Office (ISO) Commercial Risk, Inc. In rating a community, total deficiency points in the areas of evaluation are used to assign a numerical rating of 1 to 10. The best protection is 1 and 10 would be a community that is essentially unprotected. Where a single number is assigned, all properties within the classified area receive that rating. Where more than one classification is indicated, the first number applies to properties located within five (5) road miles of the responding fire department and within 1,000 feet of a fire hydrant. Class 9 applies to properties located within 5 road miles of the responding fire department but over 1,000 feet from a fire hydrant. Class 10 applies to properties located more than 5 miles from the responding fire department.

Mutual aid agreements currently exist between the City of Ishpeming Fire Department and the fire departments of the City of Negaunee and Ishpeming Township. Mutual aid agreements between fire departments provide for cooperation in the use of personnel and fire equipment for the safety, health and welfare of the people of the respective units of government in times of emergency.

Public Works

The Department of Public Works is located at 208 South Lake Street. The Department of Public Works encompasses a wide array of city services which include: streets, water, sewer, recycling, snowplowing, cemetery, parks, equipment maintenance, etc. The Supervisor also provides support to the Cemetery Board and the Parks and Recreation Commission.

A new Department of Public Works facility, where equipment could be stored inside and out of view, would be desirable for the City. There are industrial sites available throughout the City, which may provide a high quality location for a new facility.

Rental Registration Program

The City of Ishpeming employs a part time rental inspector. Landlords are required to register their rental units and the inspector will set up a walk-through appointment.

There is a charge to register each rental unit. If there are code violations in the unit, a citation is issued. Property owners are given the opportunity to make the necessary repairs and once completed a three year certificate of occupancy is issued. Property owners reserve the right to appeal violations to the Rental Inspection Board. The City has instituted the rental inspection program as part of a City-wide effort to rehabilitate and clean up residential rental properties.

Wastewater Treatment Plant and Sanitary Sewer System

Wastewater collected from Ishpeming and Ishpeming Township is treated at the facility jointly owned by the City of Ishpeming and Ishpeming Township. The five-member Ishpeming Area Joint Wastewater Board consisting of two members appointed by the City Council, two members appointed by the Ishpeming Township Board, and one member appointed by the Marquette County Health Department; oversee operations of the plant. The Board was formed to address problems faced by the individual wastewater treatment facilities in meeting federal effluent standards. Both communities were under orders from the U.S. Environmental Protection Agency to upgrade the poorly-treated wastewater effluents to federal standards by 1982. An Interlocal Agreement, dated December 10, 1981, created the Ishpeming Area Joint Wastewater Board. The full time Director of the Wastewater Treatment Plant oversees operations and four full-time and one part-time employee.

The wastewater treatment plant, which went on line in April 1986, is owned 67 percent by the City of Ishpeming and 33 percent by Ishpeming Township. In regards to usage, the City utilizes 69 percent and the Township 31 percent. The plant uses an oxidation ditch system, where oxygen and sludge are mixed together to aid the microorganisms in the break down of the wastes. The plant has a rated capacity of 2.35 millions gallons per day, adequate to serve a community with 23,500. Current volume averages about one million gallons per day. The treatment plant is in conformance with state and federal standards. The plant has sufficient capacity to handle future demands that may originate from either the City of Ishpeming or Ishpeming Township. The plant is located in the City of Ishpeming at 700 Sunset Drive.

There are planned upgrades to the wastewater system, including the addition of biocells. A biocell is a walled bunker that is used in a wastewater treatment facility to contain and assist the process of composting organic material. Additional plans include a project in cooperation with the City of Negaunee to allow Negaunee wastewater to be sent via the construction of a sanitary sewer transmission line and other needed improvements from Division Street in Negaunee to the Ishpeming Wastewater Authority plant on Sunset Drive in Ishpeming. Plans for the project are in development.

Residential wastewater users are charged a flat rate per month. The majority of the City is served by the wastewater system, with the exception of about 40 septic systems.

Public Water Supply

The City of Ishpeming, along with the City of Negaunee, is served by a municipal water system. The water system is overseen by a joint municipal water authority, with two members from Ishpeming, two members from Negaunee and one member from the county on the Negaunee Ishpeming Water Authority Board. The City utilizes nine wells for water service. There are residents in the southwest portion of the City that use private wells for water. The current water distribution system is in poor condition and is in need of upgrades. There are no future upgrades planned for the water distribution system at this time.

Water storage capacity for the City is 500,000 gallons. The City has three pumping stations for water including the Bluff Street pumping station, Bell Hospital pumping station and the Main pumping station. The water treatment plant is located at 1800 North Road in the City.

Storm sewers in the City direct runoff into the Carp River. There is no pumping system for storm water. There are no planned upgrades to the storm sewer system.

Parks and Recreation

Recreational facilities and programs are discussed in detail in Chapter 8 of the Master Plan.

City owned facilities are listed below:

- **City Playground**-located along West Empire Street
- **Al-Quaal**-located along Poplar Street
- **Lake Bancroft Park**-located between Cliff Street and the western shore of Lake Bancroft
- **Marquette Street Playlot**-located south of Business M-28
- **Barnum (7th Addition) Playlot**-located off of Carp Street
- **Lake Angeline Playlot**-located along Lower Pine Street
- **Wabash Heights Playlot**-located along Wabash Street, south of Mather "A" Ballfield
- **Salisbury Playlot**-located west of South Pine Street
- **Palms Area Playlots**-located along Juniper Street
- **Mather "A" Ballfield**-located at inactive Mather "A" Mine site in the northwest portion of the City
- **Holmes Playlot**-located between D Street and E Street off of Washington Street

- **Second Street Playlot**-located on South Second Street, west of East Superior

Solid Waste Disposal/Recycling

The City negotiates a yearly contract with a private company for solid waste collection services, currently Waste Management. Solid waste is then transported to the Marquette County Landfill.

The Marquette County Landfill is located on a 210-acre parcel of land in the northwestern corner of Sands Township. The landfill began operations in December of 1989. The landfill accepts both type II (residential/household waste) and Type III waste (demolition debris). The Marquette County Solid Waste Authority, organized in 1987, owns and manages the landfill. The appointed seven-member authority includes: three representatives at large; three members designated by the Marquette City Commission; and one member designated by the Sands Township Supervisor, who serves as the Chair. Waste arriving into the landfill comes from all 22 units of government in the county.

Curbside recycling services are provided by the City of Ishpeming. Plastic, glass, paper, cardboard and metal recyclables are picked up and taken to the City's recycling center located on Sunset Drive. Recyclables can be dropped off at the recycling center as well. There is also a compost site located at the recycling center.

Ishpeming Cemetery

The Ishpeming Cemetery is located on North Second Street and is owned and maintained by the City. The City Cemetery is maintained by the DPW Supervisor. A five member cemetery advisory board appointed by the City Council has perpetual care of the cemetery. The cemetery handles Ishpeming Township, Tilden Township and portions of Ely Township as well as the City of Ishpeming. There is also a columbarium. The Cemetery has three buildings which serve as an office, storage, garage and chapel.

Ishpeming Industrial Park

The Ishpeming Industrial Park is a 40-acre site strategically located for rail and road transportation. The Ishpeming Industrial Park is located just west of Washington Street and bordered on the south by M-28; Industrial Way is the road running through the industrial park. There is a church owned property located within the industrial park and the church utilizes all vacant property in the park. Businesses located in the industrial park include:

- Marqtran Bus Garage
- K & B Auto

- Jasper Engineering
- Laestadien Church
- Dave's Collision Center
- Superior Lawn Care
- Woody's Auto and Truck Repair
- Turino Chiropractic Center
- Donald Meyer Trucking
- Thomas Fleury, CPA

There are several lots zoned industrial along Lakeshore Drive and an additional 12-acre site in Ishpeming is zoned commercial/industrial.

Education

Ishpeming is served by three public schools, Ishpeming High School, C.L. Phelps Middle School and Birchview Elementary. District enrollment for the 2008-2009 school year numbered 889 students.

- [Ishpeming High School](#) is located at 319 East Division Street in Ishpeming and has 256 students. The high school offers classes in the following departments to 9-12th graders: art and design (visual arts), business services and technology curriculum, foreign language, health and physical education, home economics, industrial technology language arts, mathematics, music, science, social studies, virtual high school. MEAP scores are consistently high for the school district and Ishpeming schools have produced many distinguished graduates.

The high school also offers Student Organizations such as French Club, Forensics, German Club, Great Books, Health Occupations Students of America (HOSA), Hematites in Harmony, High School Bowl, Key Club, National Honor Society, S.A.D.D., Spanish Club, Student Council, Yearbook and Youth in Government.

The Ishpeming Hematites (the athletic teams for the high school) also offer complete athletic programs, including: basketball, bowling, cheerleading, cross country, dance, football, golf, gymnastics, hockey, swimming, tennis, track and field, volleyball and wrestling.

[Central Elementary](#) is located within Ishpeming High School and is home to grades K-4.

The [W.C. Peterson Auditorium](#) is located within the Ishpeming High School and opened in 1931. The auditorium is 1,134 seats and is the largest of its kind in the

region. Through the efforts of a community/alumni fund drive, the facility received a \$160,000 renovation in 1988. The refurbished hall has seen performances by such distinguished groups as the Vienna Boys Choir and the Taiwan Acrobatic Troupe. The Auditorium serves as a cultural center and a source of pride for citizens of the area and alumni of the school.

- **C.L. Phelps Middle School** is located at 700 East North Street in Ishpeming and houses grades 5-8, enrollment is at 273 students. C.L. Phelps Middle School offers students classes in language arts, mathematics, science, social studies, home economics, health, physical education, art, and multimedia. Students also have the opportunity to join organizations such as Builder's Club, Yearbook, or Student Council. C.L. Phelps Middle School also offers athletics for seventh and eighth grades. These sports consist of basketball, cheerleading, and track. Student Athletes in C.L Phelps are known as the Panthers.
- **Birchview Elementary** is located at 663 Poplar Street in Ishpeming and houses Pre-Kindergarten through 4th grades with an enrollment of 360 students. Birchview offers elementary students a comprehensive elementary curriculum. Students also have the opportunity to engage in special events like Young Authors, Safety Programs, the Moosewood Nature Center and the Liberty Children's Art Program. Some students also have access to Title I programs to help children overcome obstacles in learning.
- **North Star High School/Polaris Middle School** is located at 3030 Wright Street in Marquette. North Star Academy (NSA) was established as an alternative high school in 1994 and became a Public School Academy, chartered by Northern Michigan University in 1997. Today NSA serves students of all academic abilities in grades 6-12. North Star Academy is a member of the Coalition of Essential Schools (CES), a growing network of over 1,200 schools and 20 regional support centers that promotes higher student achievement and develops more nurturing and humane school communities.

Bell Hospital

The original Bell Memorial Hospital was built in 1918 and located in downtown Ishpeming. The former Bell Memorial Hospital facility has been sold to a private investor. In September 2008, the new Bell Hospital celebrated its grand opening. The new 25 bed facility is located on 35 acres at 901 Lakeshore Drive in Ishpeming and is 102,427 square feet with a 44,244 square foot medical office building. Bell Hospital has over 90 physicians on its active and consulting medical staff, with additional offices in several locations. The 130,000 square foot building is divided into two sections. The

clinic features an eye care center, an in-house pharmacy and a gym, among other services, while the hospital is designed with small waiting rooms for each department and all individual patient rooms.

In January 2009, Bell opened the Cliffs Health Center. The new clinic provides access to physicians dedicated exclusively to Cliff Natural Resources employees and their families covered by Cliffs benefits plans. The center will provide risk appraisals, wellness programs, and disease management, as well as an on-site laboratory, pharmacy and fitness center.

The hospital offers a full range of services, including: x-ray, mammography, ultrasound, laboratory, respiratory therapy, and nuclear medicine, plus general/ambulatory surgical units, a coronary care unit, and obstetrics with private birthing suites. The surgical center performs procedures on a daily basis, from colonoscopies, hysterectomies, gall bladder, total knee and hip replacements, plus arthroscopies, carpal tunnel, cataracts, endoscopies, hernias, tonsils, and vascular. Bell also offers rehabilitation services, including physical occupational therapy and speech therapy, with our newest addition being our Sports Health Department.

Bell Behavioral Services, a department of Bell Hospital, also provides adult, child, and adolescent therapy services, plus substance abuse counseling and psychological assessment. Bell Behavioral is located at the Bell Medical Tobin Center, 97 South 4th Street in Ishpeming. Ambulance service in Ishpeming and the surrounding area is also provided by Bell.

Library

Library materials and services are available at the Ishpeming Carnegie Public Library at 317 North Main Street in Ishpeming. The library opened April 2, 1904 and serves the City and also serves the outlying Townships of Ishpeming, Ely, Humboldt, Champion and Tilden. The Carnegie Library is governed by a board. There are about 65,000 titles available for circulation at the library. The library also includes a children's library as well as a teen library.

Support of the library is through funding from the City of Ishpeming's general fund, penal fines and state aid and augmented by contractual arrangements with the Townships. The contract specifies an annual allocation as well as assigning the penal fines and state aid from the Department of History, Arts and Library to the Ishpeming Library. The Friends of the Library group is active in fund raising for the library and presents many special programs of cultural interest. The City of Ishpeming is actively engaged in pursuing the establishment of a district library which may potentially benefit

the following communities: Negaunee Township, Ishpeming Township, Ely Township, Tilden Township, Humboldt Township and Michigamme Township.

Zoning Administration

The City's Zoning Ordinance is administered by the City Zoning Administrator. Among its duties, the Planning Commission is responsible for issuance of Conditional Use Permits, review of Planned Unit Developments, and review/recommendation concerning amendments to the zoning ordinance. Building permits are obtained through the Marquette County Resource Department.

6.4 Additional Public Facilities and Services

Ishpeming Senior Center

The Ishpeming Senior Center is located at 320 South Pine Street. The building is owned by the City and the center is run by the Commission on Aging. Services to seniors are funded largely by the State of Michigan and Marquette County.

Marquette County Road Commission

The Marquette County Road Commission (MCRC) is responsible for maintaining state, county and local roads in Marquette County. The MCRC serves and maintains approximately 1,482 miles of roads. The MCRC is comprised of approximately 75 employees including administration and engineering staff, drivers, equipment operators and mechanics. Winter maintenance (plowing, sanding, salting) in addition to road construction, street paving, controlling vegetation, and roadside ditch maintenance are the responsibility of the MCRC. MCRC Board meetings are held at the Road Commission office at 1610 North 2nd Street in Ishpeming.

Marquette County Health Department

The Marquette County Health Department (MCHD) is located at 184 US-41 East in Negaunee. The mission of the MCHD is to serve people by assessing, promoting and assuring health within our community. Their vision is healthy choices for a healthy community. The MCHD strives to: assure the quality and accessibility of health services, prevent epidemics and the spread of disease, promote safe and healthy behaviors and protect against environmental hazards. The MCHD offers a wide array of services including but not limited to: adolescent health promotions, breast and cervical cancer screening, cholesterol screening, communicable disease control, family planning, food service sanitation, general environmental health, immunizations, senior health screening, smoking cessation and well care, inspections and installations.

Marquette County Sheriff's Department

The Marquette County Sheriff's Department operates out of the Marquette County Sheriff's Department and Jail, located immediately adjacent to the Marquette County Courthouse in Marquette. The department is staffed by 70 full and part-time employees, including 26 road patrol officers, 26 corrections officers, detectives, an under sheriff, a sheriff, and support staff.

Its functions include road patrol, investigative, civil process, marine/snowmobile/or patrol, search and rescue, management of the 80-bed Marquette County Jail, and assistance with court activities (bailiff/transport/security). The Sheriff's Department participates in the Upper Peninsula Substance Enforcement Team.

Michigan State Police

The Michigan State Police Post is located in Negaunee Township on M-28/US-41. There are currently 21 officers assigned to the post: nine officers, two lieutenants, six sergeants, two detective sergeants, one special sergeant (Fire Marshall) and one motor carrier officer. The troopers respond to incidents throughout Marquette County, as requested by Central Dispatch. All of the officers are authorized to enforce the state and local laws and ordinances. The motor carrier officer enforces the state's commercial vehicle code and the Fire Marshall investigates fire within the area.

Enhanced 911 System

Emergency services in Marquette County including fire, police and ambulance services, are dispatched by the Marquette County Central Dispatch using an enhanced 911 system. The enhanced 911 service identifies the address from which an emergency call is made on the dispatch screen. This feature makes it easier for emergency personnel to locate a site if a caller is unable to provide directions. Central Dispatch is located within the Negaunee State Police Post.

Marquette County Emergency Services

This office is responsible for multi-hazard mitigation planning, protection of public health and safety, preservation of essential services, prevention of property damage, preservation of the local economic base, and response to community disasters. A full-time director reports directly to the county board.

Marquette General Hospital

Marquette General Hospital, the Upper Peninsula's regional medical center, is located in the City of Marquette. The 352-bed specialty care hospital provides care in 54 specialties and subspecialties and 24-hour emergency services. Marquette General houses the Upper Michigan Heart Institute; the Upper Michigan Centers for

Neuroscience, Rehabilitation and Cancer Treatment; and Upper Michigan Behavioral Health Service. The Family Practice Residency Program serves as a teaching facility affiliated with Michigan State University. The medical staff of more than 200 doctors work with the about 2,700 employees providing care to approximately 11,000 inpatients and 350,000 outpatients per year.

Sawyer International Airport

The Marquette County Airport operations moved from their location on M-28 in Negaunee Township to the former K.I. Sawyer Air Force Base in September 1999. The new location has added considerable time and distance to Ishpeming residents wishing to use the facility. It is one of seven airports in the U.P. that provide local commuter and corporate charter service. The airport is served by Mesaba Airlines/The Delta Connection to Detroit and Minneapolis and American Eagle Airlines to Chicago via Milwaukee. Sawyer is home to the longest runway in the State of Michigan at 12,370 feet in length.

Marquette Area Regional Educational Service Agency

Technical education, early childhood education, special education, and general services are provided by the Marquette Area Regional Educational Service Agency, formerly the Marquette County Intermediate School District. Administrative offices and instructional facilities are located in the city of Marquette. The MARESA is a consortium of the public schools in Marquette County. Beyond direct and support services to students, the agency offers support services to teachers and administrators in areas such as professional development and regulatory compliance.

Marq-Tran

Marquette County Transit Authority (MARQ-TRAN) was created in 1985 through the consolidation of three public transit systems within Marquette County. MARQ-TRAN currently makes transit services available to all Marquette County citizens and operates both fixed-route and demand-response service to meet the public demand. MARQ-TRAN offers limited services on Sundays and holidays (one fixed route - Marquette to Ishpeming); and also door-to-door service only in the greater Marquette and Ishpeming-Negaunee areas. MARQTRAN operates 365 days per year and serves as the Indian Trails ticket agent and tickets are available at MARQ-TRAN's new facility at 1325 Commerce Drive in Marquette.

Northern Michigan University

Northern Michigan University, located in the City of Marquette, offers more than 180 programs in 32 different departments with credentialing that ranges from certificates and associate degrees to masters degrees. The physical campus includes 56 buildings

on a campus of 336 acres. A 350-member faculty teaches the enrollment of approximately 8,700 students.

Cable Television Service

Cable television service is currently available through Charter Communications for the City. In addition, high-speed Internet service is available through the cable system.

Electrical Service

Electrical service in Ishpeming is provided by the Upper Peninsula Power Company. The distribution system (poles, lines, etc.) is owned and maintained by UPPCO.

Natural Gas Service

SEMCO Energies provides natural gas service to Marquette County. A natural gas distribution network makes gas available throughout the Ishpeming area.

Postal Service

The Ishpeming post office is located at 211 North Second Street. Mail is processed through the United States Postal Service Regional Distribution Center in Kingsford.

Telephone Service

Local telephone service in Ishpeming is provided by AT&T and Charter Communications. Long distance service can be obtained from several carriers that serve the area. Cellular service is also available through several providers.

MDOT Carpool Rideshare Lots

There are two MDOT carpool rideshare lots in Ishpeming. A carpool lot is located at the Ishpeming Senior Center, 320 Pine Street. The second carpool lot is located off of US-41 about 1,000 feet before Cooper Lake Road on the west side of Ishpeming (when coming from the north).

6.5 Issues and Opportunities

- **Current budget constraints require innovative and responsible spending.**
- **City Hall was recently upgraded, but monthly City Council meetings are held at the Ishpeming Senior Center due to that buildings' handicapped accessibility.**
- **The public works building is very outdated and is in need of replacement or upgrades. There are various industrial sites throughout the City that may provide an appropriate location for a new facility.**

- Ishpeming currently shares the wastewater treatment plant with Ishpeming Township. Plans are being developed to allow the City of Negaunee's wastewater to be sent via the construction of a sanitary sewer transmission line and other needed improvements from Division Street in Negaunee to the Ishpeming Wastewater Authority plant.
- **Ishpeming's water distribution system is shared jointly with the City of Negaunee and is in need of upgrades.**
- The Ishpeming Industrial Park's available land is filled to capacity. Any vacant land in the park is utilized by a church. There is additional vacant land for industrial uses available in the City.
- The City is fortunate to have a successful school system that continuously obtains excellent MEAP scores and provides area students with a variety of educational and recreational opportunities.
- In September 2008, Bell Hospital opened a new facility in Ishpeming providing a wide range of services and quality care. The former Bell Memorial Hospital building has been sold to a private developer.
- The City of Ishpeming is actively engaged in pursuing the establishment of a district library which may potentially benefit numerous surrounding communities.