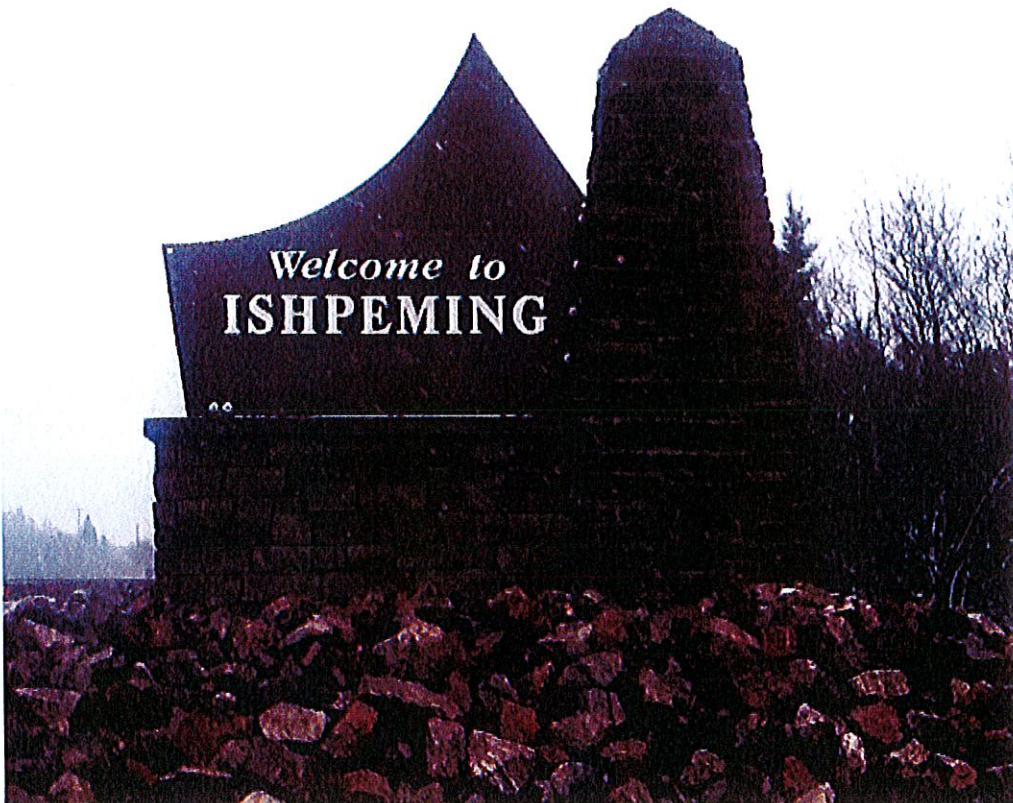


**City of Ishpeming,
Marquette County, Michigan**

**Community Recreation Plan
2018 to 2022**



Adopted: February 13, 2018

By

City Council

Approved by: Planning Commission, and Parks & Recreation Commission

TABLE OF CONTENTS

| | <u>PAGE</u> |
|---|-------------|
| 1.0 Introduction | |
| 1.1 Community Description | 1 |
| 2.0 Administrative Structure | 1 |
| 2.1 Staff | 3 |
| 2.2 Budget | 3 |
| 2.2.1 Projected Annual Budget | 3 |
| 2.2.2 Funding Sources | 3 |
| 2.3 Role of Volunteers | |
| 3.0 Inventory of Existing Resources | 4 |
| 3.1 City Recreational Facilities | 4 |
| 3.2 Public and Private School Recreational Facilities | 8 |
| 3.3 Public Owned Facilities and Public Museums | |
| 3.4 Private Recreational Facilities | 10 |
| 3.5 Nearby Recreational Facilities | 11 |
| 3.6 Natural Resource Inventory (map) | 13 |
| 4.0 Description of the Planning and Public Input Process | 14 |
| 4.1 Community Data | 14 |
| 4.1.1 Population | 14 |
| 4.1.2 Age Characteristics | 15 |
| 4.1.3 Gender | 15 |
| 4.1.4 Economic Characteristics | 15 |
| 4.1.5 Area Physical Characteristics | 16 |
| 4.1.6 Land Use | 17 |
| 4.1.7 Local Transportation System | 17 |
| 4.2 Recreation Standards | 17 |
| 4.2.1 Suggested Facility Standards | 17 |
| 4.2.2 Classification System for Local and Regional Open Space/Trail | 18 |
| 4.2.3 National Park and Recreation Standards for Park Acreage | 19 |
| 4.2.4 Barrier Free Accessibility Requirements for Parks | 19 |
| 4.3 System Approach to Planning | 20 |
| 4.3.1 The Public Input Process | 20 |
| 5.0 Goals and Objectives | |
| 5.1 Goal and Objectives | 20 |
| 5.2 Identified Recreational Needs | 21 |
| 6.0 Action Program | 23 |

APPENDICES

| | |
|------------|---|
| APPENDIX A | MAPS |
| APPENDIX B | NATIONAL RECREATION AND PARK ASSOCIATION SUGGESTED FACILITY DEVELOPMENT STANDARDS |
| APPENDIX C | NATIONAL RECREATION AND PARK ASSOCIATION RECOMMENDED CLASSIFICATIONS SYSTEM FOR LOCAL AND REGIONAL RECREATION OPEN SPACE AND TRAILS |
| APPENDIX D | NATIONAL RECREATION AND PARK ASSOCIATION STANDARDS FOR PARK ACREAGE |
| APPENDIX E | BARRIER FREE ACCESSIBILITY REQUIREMENTS FOR PARKS |
| APPENDIX F | PUBLIC PARTICIPATION: SURVEY INFORMATION, NEWSPAPER AFFIDAVITS, MEETING MINUTES, ETC. |
| APPENDIX G | RESOLUTIONS OF ADOPTION |
| APPENDIX H | LETTERS OF TRANSMITTAL TO COUNTY AND REGION |
| APPENDIX I | CONCEPTUAL SITE PLANS |

1.0 Introduction

The City of Ishpeming is a 9.38 square mile parcel of land located in the central portion of Marquette County, within the Marquette Iron Range of the Upper Peninsula of Michigan. It is located adjacent to the west of the City of Negaunee, and about 14 miles west of the City of Marquette. A map showing the location of the City of Ishpeming is located in Appendix A.

1.1 Community: The City of Ishpeming is an historic mining town that is transitioning itself into a recreational destination. While our community is inseparable from the history of mining on the Iron Range, the City has a tremendous future in its unique combination of rugged county, rich natural resources, and recreational opportunities. The Iron Range is geographically isolated and even today largely undeveloped wilderness. Most local development occurred because of the wealth underground. The early mining activities lead to the establishment of numerous operational mines within the City limits. The City's homes and businesses literally grew up around the mines. Some of these historic sites have been preserved or are being preserved for future generations to learn about the early life of miners and their families. Today, there are no active mines within the City's corporate limits; however, the Tilden Mine (Iron) is located south of the City in Tilden Township and the Eagle Mine (Copper and Nickle) is located north of the City Powell Township. Mining still has a significant impact on the City's economy, but not as much as it once did. In recent decades, Ishpeming has served as a bedroom community for Marquette. During this period, recreation and tourism have become more important to the economy of the City. The growth of tourism has been the result of increased interest in recreational opportunities within the area and to a lesser extent in mining history. The service and retail trade sectors benefit from money spent by visitors to the area. Ishpeming's future is bright as we continue to create and sustain a vibrant community that preserves and appreciates its amazing history and abundant natural resources.

1.2 Purpose of Plan: This Recreation Plan serves several useful purposes. It is

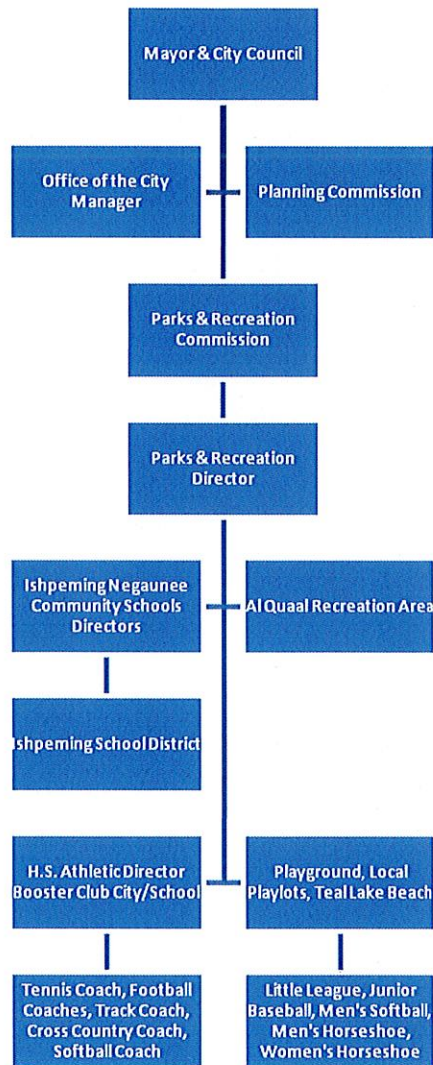
1. A source of information
2. A guide for correcting deficiencies and making improvements
3. Statement of goals and objectives
4. A framework for making decisions
5. A means of stimulating public interest and participation in local community planning
6. A stand-alone component of the City's Master Plan for recreation development planning

This plan was adopted by the City Council on February 13, 2018. A copy is on file with the Marquette County, Carnegie Public Library, and the CUPPAD Regional Commission.

2.0 Administrative Structure

Under 1917 Public Act 156, the City of Ishpeming has appointed a Parks and Recreation Commission. The Parks and Recreation Commission is a 9 person advisory group which includes representatives from Ishpeming City Council, Ishpeming High School Superintendent, and other community members. The Commission meets on a regular basis to formulate initiatives for the City's recreational programs and park system, to provide oversight for these areas, and to review and recommend changes to this plan. In addition, we share all our plans with our neighbors in the City of Negaunee, Ishpeming Township, and Negaunee Township. In 2007, the City of Ishpeming and City of Negaunee created a shared use plan for about 300 acres north of Teal Lake and within the City limits of Negaunee. Presently this parcel of land is used for cross country ski trails, hiking trails, and as a nature preserve.

**Figure 2-1
City of Ishpeming
Parks & Recreation**



Other City organizations that have a significant role in Parks and Recreation include the Department of Public Works, Police Department, Zoning Board of Appeals, Downtown Development Authority, Neighborhood Improvement Committee, Cemetery Board, and Library Board.

2.1 Staff

The City currently employs approximately 40 full-time equivalent employees. Departments include City Hall, Carnegie Public Library, 24/7 Police Department, Public Works Department, and a Volunteer Fire Department.

The two full-time Parks and Recreation employees are part of the Department of Public Works. They, along with seasonal workers, are responsible for the maintenance and operation of over 600 acres of park land.

2.2 Budget

2.2.1 Historic and Projected Annual Budgets

In recent years, the City has spent an average of about \$220,000 annually for parks and recreation operations, maintenance, and capital investment. The projected budget for the next five years will sustain this level of support. One-time capital improvement projects are not included in this amount.

2.2.2 Funding Sources

The City of Ishpeming funds recreation activities mainly through its property tax revenue. The City receives nominal user fees for a few activities such as the tube slide, special events, and baseball leagues. The fees received are intended to pay for the additional costs directly associated with providing these specific services. Fees charged are not intended to make additional revenue for parks and general recreational programming. The City does not charge any surcharges or special fees based on residency or non-residency.

2.3 Role of Volunteers

Volunteers are critical to our recreational programs. The City enjoys over 100 people who volunteer to assist with recreational programs or special activities throughout the year. The City provides and maintains recreational facilities for users, but provides limited programming. Most recreational programs that require organizing and scheduling are guided by community volunteers. City officials maintain an oversight role to ensure equitable usage among various groups and that timely and necessary maintenance is completed at City-owned recreational facilities.

The City has had a long and successful relationship with both community and school organizations. Community organizations involved with recreation include the Downtown Development Authority (DDA), Ishpeming Business Association, Kiwanis, Ishpeming Ski Club, various organizations that support youth baseball, and local churches. The School partners include the representatives from the Ishpeming/NICE/Negaunee Community Schools, the Ishpeming High School Athletic Director, the Booster Club, various Ishpeming public school coaches, and other school officials.

Along with support from various community groups, the City has received both corporate and individual donations which have been extremely helpful with ongoing activities and projects. There is a tremendous amount of support from the community for our parks and recreation program.

The Range Mountain Bike Club (RAMBA) has planned, constructed, and currently maintains 300 miles of mountain bike trails in the City of Ishpeming, Ishpeming Township, and City of Negaunee. RAMBA continues to create new recreational facilities via a permit arrangement with the City.

3.0 RECREATION INVENTORY

3.1 City Recreational Facilities

A map of the recreation facilities can be found in Appendix A.

1. City Playground

Size: 60 acres

Accessibility Assessment Rating: 4

Located along West Empire Street in the north central portion of the City. About 16 acres of the total acreage is undeveloped. The remaining area provides various types of recreational activities. Facilities at the park include:

City Playground

- Two Lighted Ball Diamonds
- Two Unlighted Tennis Courts
- Two Lighted Basketball Courts
- Warming Shelter & Restrooms*
- Stadium (2,600 seating)*
- Paved Track*
- Lighted Football Area*
- Storage Building & Restrooms*
- Pavilion/Concession Area*
- Parking and Entrance*
- Renovated Hardball Field
- Six Unlighted Ball Diamonds
- Five Lighted Tennis Courts
- Restroom/Locker Room*
- Backstop Roads
- Twelve Sets of Bleachers
- Three Paved Field Event Areas
- Concession Area
- New Softball Field
- Three Little League Baseball Fields
- New Fencing (Ball fields/perimeter)

Playground Inventory

- Four Swing Sets
- Four Teeter Totters
- Slide
- Climber
- Six Fields
- 16 Benches
- Four Picnic Tables
- Two Flagpoles
- Two Lighted Paved Basketball Courts
- Merry-go-Round
- Seven Tennis Courts
- Seven Backstops
- 13 Bleachers
- Ten Dugouts
- Two Bike Racks
- Two Electric Scoreboards
- Three Football Goal Posts

Tot Lot Inventory

- Saddle Mate Swing
- Snyder-the-Spider
- Spring Mate w/Handrail
- Mini-Dale
- Dome Climber
- Two Picnic Tables
- Swinging Gate
- Buck-a-Bout
- Four Saddle Mates
- Eagle Whirl
- Sandbox

*Note: Items marked with an * are on property owned by the City and leased by the School District.

DNR Grant History: 1972, Project No. 26-00339
 1976, Project No. 26-00762
 1980, Project No. 26-01104 T1
 1989, Project No. BF89-521
 1989, Project No. BF89-66

2. Al-Quaal**Size: 460 acres****Accessibility Assessment Rating: 2**

This regional recreation site is located in the northern portion of the City, along Popular Street. It is the largest single recreation area within the City's corporate limit. The land that currently makes up this recreational area was leased by the City in 1939 and purchased in 1999.

Al Quaal is also known as the Winter Sports Area. Primary winter activities include cross-country skiing, snowshoeing, sledding, and snow biking. This area is used for high school, college, regional, and Olympic-level cross-country ski events. It is an FIS certified and homologated Cross Country Ski Stadium.

It has hosted numerous cross-country ski events, including:

- Michigan High School State Championships
- Masters Cross-country Ski Championship
- Annual Noquemanon Ski Marathon (regional event)
- Central Collegiate Midwest Regionals and Conference Championships
- Midwest Junior Olympic Qualifying Races
- Midwest Junior Olympic Combined Nordic Qualifying Races
- U.S. Super Tour

The site is used year round, with tennis, basketball, baseball, horseshoes, volleyball, mountain biking, hiking, swimming picnicking, boating, and fishing, occurring in the summer months and skiing, tobogganing, ice fishing, snowmobiling, and snowbiking occurring in winter months. Al Quaal has also hosted the World Championship Snow Bike Race. Facilities at this site include:

- | | |
|-------------------------------------|--|
| ➤ Ball Diamond | ➤ Downhill Ski Slopes |
| ➤ Restroom Building | ➤ Ski Warming Shelter |
| ➤ Ski Ticket & Patrol Shelter | ➤ Ski Tow Buildings |
| ➤ Tube Slide | ➤ Two Tennis Courts |
| ➤ Picnic Area | ➤ 40 Picnic Tables |
| ➤ 12 Picnic Grills | ➤ Seven Swing Sets |
| ➤ One Maypole | ➤ Two Merry-go-Rounds |
| ➤ Gym Set | ➤ Two Slides |
| ➤ Backstop | ➤ Flagpole |
| ➤ 6 Horseshoe Courts | ➤ Pavilion |
| ➤ Tube Slide with tow system | ➤ Disc Golf Course |
| ➤ Snowboarding | ➤ Snowshoeing Trail |
| ➤ Lighted Sledding Area | ➤ Mountain Bike Trail System |
| ➤ Teal Lake – Log Cabin | (into area North of Teal Lake) |
| ➤ Large Playlot at Birchview School | ➤ Clubhouse (Restrooms, Concession |
| ➤ Mountain Bike Trail | Area, and Kitchen Facilities) |
| ➤ Fitness Trail | ➤ Sledding Areas |
| ➤ Paved Roads | ➤ Deer Lake Trails (w/Ishpeming Twp.) |
| ➤ 30 KM of Cross-Country Trails | ➤ Lighted Areas (Horseshoes, Volleyball, |
| | Cross-Country Skiing) |

DNR Grant History: 1979, Project No. 26-01052; 1990, Project No. TF90-242; 1991, Project No. TF91-080; 1994, Project No. TF94-054; 1995, Project No. TF95-316; and 1997, Project No. TF97-228

3. Lake Bancroft Park**Size: 4 acres****Accessibility Assessment Rating: 4**

This three acre parcel is a community park located between Cliff Street, Euclid Street, and the west shore of Lake Bancroft. This property was originally developed by a local Jaycee group. Surrounding bluffs, the historic Cliff's Shaft Mine Museum, and Lake Bancroft makes this setting one of the most attractive areas in the City. Facilities at the recreational site include:

- 16 Picnic Tables
- Five Dusk-to-Dawn Lights
- State Historical Marker
- Rustic Sign
- Gazebo
- Restrooms
- Park Signage and Identification
- Jogging/Walking Area
- Eight Picnic Grills
- Flagpole and Marker
- Paved Walking Path
- Paved Parking Area
- New Brick Path Memorial
- Decorative Water Fountains
- Bike Path Around Lake

Note: a new pavilion project is planned to be constructed in 2018. This project is valued at over \$600,000. At the time of adoption of this plan, the DNR grant agreement had not been approved.

DNR Grant History: 1976, Project No. 26-00787

4. Marquette Street Playlot**Size: 1 acre****Accessibility Assessment Rating: 2**

A one acre neighborhood recreation site that is located in the east central portion of the City, south of Business M-28. Facilities at this site include:

- Three seat swing set
- Slide
- Basketball standard

5. Barnum (7th Addition) Playlot**Size: 11 acres****Accessibility Assessment Rating: 2**

This eleven acre neighborhood park is located off of Carp Street in the west central portion of the City. Facilities at this site include:

- Three seat swing sets
- Slide
- Whirl merry-go-round
- Basketball standard
- Picnic table
- Ball field and backstop

6. Lake Angeline Playlot**Size: 1 acre****Accessibility Assessment Rating: 3**

This neighborhood park is located on a one acre parcel of land along Lower Pine Street, just west of Lake Angeline. The boulevard at the site was formerly an old trolley route. The park has the following facilities:

- Three seat Swing Set
- Slide
- Whirl merry-go-round
- Picnic table
- Paved basketball court

7. Bruce Asgaard Park**Size: 1 acre****Accessibility Assessment Rating: 3**

This one acre neighborhood recreation site is located along Wabash Street, just south of Mather “A” Ball field. It was renamed from the Wabash Heights Playlot to the “Bruce Asgaard Park” in 2016. Facilities at this site include:

- Buck-a-bout
- 10’ Whirl merry-go-round
- Two paved basketball courts
- Picnic table
- Volleyball court
- Three house slide
- Four saddle mates
- Three seat swing set
- Barrier poles and parking area
- Basketball Court

8. Salisbury Playlot**Size: 1 acre****Accessibility Assessment Rating: 2**

This neighborhood park is a one acre parcel of land located in southern portion of the City, west of South Pine Street. Facilities at this site include:

- Swings set with three seats
- Slide
- Picnic table
- One molded animal

9. Palms Area Playlot**Size: 1 acre****Accessibility Assessment Rating: 3**

This neighborhood park is a one acre parcel of land located in the northern portion of the City. It is accessible at the southern end of Hickory Street. Facilities at this park include:

- Swing set with three seats
- Merry-go-round
- Slide
- Basketball standard

10. Mather “A” Ballfield**Size: 1 acre****Accessibility Assessment Rating: 2**

A one acre community recreation site located at the inactive Mather “A” mine site in the northwestern portion of the City. The site was acquired in 1984 by the City as an additional auxiliary ball field to compliment expansion of recreation leagues. It was built by the Cleveland Cliffs Iron Company (CCI) originally to service their employee softball league. Because of scheduling and maintenance problems, CCI requested the City take over this area. The ball field is now used on a daily basis during the summer months because of the current demand for ball field facilities. Facilities at this site include:

- Backstop
- Two benches
- Port-a-john (seasonal)
- Handicap parking
- Two bleachers
- Paved barrier poles

11. Holmes Playlot**Size: 1 acre****Accessibility Assessment Rating: 4**

This one acre neighborhood park is located in the western portion of the City between D Street and E Street, off of Washington Street. Facilities at this site include:

- Tree house jungle gym
- Picnic tables
- Four seat swing set
- Basketball standard

12. Second Street Playlot**Size: 1 acre****Accessibility Assessment Rating: 3**

This neighborhood park occupies a 1 acre parcel of land located in the central portion of the City, on South Second St., west of East Superior.

- Swing set
- Picnic table

- Merry-go-round
- Fenced playground

13. Power of Ten Pocket Park**Size: .12 acres****Accessibility Assessment Rating: 5**

The “Power of Ten Pocket Park” was added to the City’s park system in 2017. It has ten features: public art, Jasperlite Boulders (mining heritage), split rail fence (lumbering heritage), Little Free library, bike rack, picnic table, park bench, Iron Ore Heritage Trail interpretive sign, raised bed flower garden, and kiosk. This pocket park was made possible by a grant from CUPPAD.

14. Malton Road Non-Motorized Trail**Size: 2 acres****Accessibility Assessment Rating: 5**

This new (completed in 2017) facility includes approximately 4,700 lineal feet of hot mix asphalt (HMA) paved surface with a width of about 8 feet, running north/south along the western edge of Malton Road from the Iron Ore Heritage Trail to a point of tall rock bluffs and a crushed limestone trail of about 700 lineal feet to the eastern edge of the residential area at New York Street. This trail provides recycle and trash containers, picnic tables, native landscaping, and access to miles of single track bike trails. The trail allow direct access from built up residential areas to the 600 acre Hematite Heights recreation area which is City owned land currently available for many recreational uses and for natural resource conservation.

Grant: DNRTF TF14-0265

3.2 Public and Private School Recreational Facilities**Ishpeming High School/Central School****Size: 5 acres****Accessibility Assessment Rating: 3**

These two schools occupy the same structure which is located on a five acre parcel of land in the central portion of the City, along Division Street. Facilities provided at this site include:

- Pool (open for public uses at specified times)
- Two gymnasiums
- Volleyball
- Weightlifting Room
- Wrestling Equipment
- 4 Locker Rooms

Birchview Elementary School**Size: 2 acres****Accessibility Assessment Rating: 3**

A two acre parcel on Popular Street. Facilities provided at this site include:

- Gymnasium
- Two seat swing set
- Merry-go-round
- Two locker rooms
- Two basketball standards
- Cafeteria
- Slide
- Two tennis courts
- Climbing tower
- Fenced tot lot area

3.3 Public Owned Facilities and Public Museums

| | | |
|--|---------------------|---|
| Ishpeming Senior Citizen Center | Size: 1 acre | Accessibility Assessment Rating: 4 |
|--|---------------------|---|

The Senior Center is a community multi-purpose facility located along South Pine Street in the central portion of the City. The facility offers the following recreational opportunities to seniors: bingo, crafts, cards, movies, exercise, hiking club, shuffleboard, chorus, trips, oil painting class, dances, and day excursions.

| | | |
|----------------------------|----------------------|---|
| Senior Citizen Park | Size: 5 acres | Accessibility Assessment Rating: 4 |
|----------------------------|----------------------|---|

This 5 acre mini-park is located within the senior citizen housing complex area, along Bluff Street in the central portion of the City. The site has the following facilities:

- Two picnic tables
- Flower garden
- Flagpole
- Patio area and paved path

| | | |
|----------------------------------|---------------------|---|
| Lake Angeline Boat Launch | Size: 1 acre | Accessibility Assessment Rating: 4 |
|----------------------------------|---------------------|---|

In 2016, the Michigan Department of Natural Resources constructed and operates this terrific new facility. It includes an ADA accessible boat launch and ample parking.

| | | |
|---|-----------------|---|
| U.S. National Ski and Snowboard Hall of Fame | One Acre | Accessibility Assessment Rating: 5 |
|---|-----------------|---|

The U.S. National Ski and Snowboard Hall of Fame structure is located on a one acre parcel of land, on the south side of U.S. Highway 41/M-28. The one and a half million dollar structure was constructed in 1992. It is a museum with historical displays and artifacts of skiing of U.S. and international origin. Annually, the Ski and Snowboard Hall of Fame induct a new class of inductees. In 2016, the Ski Hall installed new landscaping and a larger-than-life Ski Jumper Statue at the entrance to the facility.

| | | |
|------------------------------|----------------------|---|
| National Guard Armory | Size: 4 acres | Accessibility Assessment Rating: 4 |
|------------------------------|----------------------|---|

The National Guard Armory facility is located on the south side of U.S. Highway 41/M-28 in the northeastern portion of the City. It provides the following recreational facilities: Gymnasium and walking trail. The Armory is also host to a number of community events and community volunteer efforts.

| | | |
|--------------------------------|----------------|---|
| Cliff Shaft Mine Museum | 10 Acre | Accessibility Assessment Rating: 4 |
|--------------------------------|----------------|---|

The Cliff Shaft Mine Museum is the original Cleveland Cliffs iron mining facility, originally operated in 1884. Architecturally unique mine shaft head frames and other original artifacts are available for view. This historic site (listed on the National Register of Historic Places) is open seasonally for public tours.

3.4 Private Owned Recreational Facilities

The following recreational facilities are privately owned facilities in the City of Ishpeming or in close vicinity of the City. They are for use by the general public:

| Facility | Location | Description |
|------------------------|-------------------------------|--------------------------------------|
| River Rock Lanes | 1011 North Road | 16 Bowling Lanes, 6 Billiards Tables |
| St. Johns Church | South Pine Street | Gymnasium |
| 906 Cross Fit | Lakeshore Drive | Strength and Fitness Club |
| Cross Bridge Church | 119 N. Third Street | New Gymnasium |
| Heritage Hills | 300 Malton Road | Riding stable and horse trails |
| Wawonowin Country Club | CR478, Six Miles West of City | Club and 18 Hole Golf Course |
| Ishpeming Trail Riders | Ishpeming Township | Horse Shows |
| Ishpeming Beagle Club | Four Miles West of City | Field Shows |
| St. Joseph's Church | Prairie Street | Gymnasium |
| Strength and Fitness | 115 South Main Street | Health and Fitness Club |
| Ski Club of Ishpeming | Suicide Bowl Road | Ski Jumping Club |

3.5 Nearby Recreational Facilities

Residents of the City of Ishpeming also use the following public recreational facilities:

City of Negaunee

Negaunee Ice Arena: A full-sized, city owned, area with restrooms, lobby, 4 locker rooms, summer volleyball court, and hard surface parking area. This site is a 3.5 acre parcel.

Lacombe Field: Owned by the city, this is a 3.3 acre parcel with an illuminated softball field, restrooms, storage facility, and open field used for football practice and soccer.

Lions Field: City owned baseball field with six illuminated horseshoe courts, playground equipment, restrooms, concessions, and a storage building. This site is a 2.1 acre parcel.

Iron Town Field: City owned baseball field with concessions, restrooms, and storage building. This is a 5 acre site.

Jackson Park: Five acre, city owned, park with picnic area, 12 picnic tables, playground equipment, 2 tennis courts, and 6 horseshoe courts.

Miner's Park: Five acre, city owned, park with picnic area, 2 illuminated basketball courts, playground equipment, 2 horseshoe courts, green open area, historical markers, and volleyball courts.

City of Marquette

Presque Isle Park: 312-acre park with 2 picnic areas, cross-country ski trail, playground, 2 tennis courts, band shell, fishing, shuffleboard, horseshoe pits, gazebo, breakwall with lighthouse, outdoor swimming pool, and water slide.

Presque Isle Marina: 40-acre site with boat launching and docking facilities on Lake Superior.

Marquette Mountain: Downhill skiing, lodge, and picnic area.

Lakeview Arena: Recreation and Convention facility used for hockey, skating, concerts, shows, exhibits, etc.

Superior Dome: World's largest wooden dome containing football field, indoor track facility, weight lifting, also used for trade shows, concerts, walking/running, etc.

Mount Marquette Lookout: Lookout view of the City of Marquette and Lake Superior, snowmobile trail, and hiking trail.

Marquette Township

Sugar Loaf Mountain Area: 80-acre site with nature trail and scenic overlook.

NMU Forest (Long year Forest): 180-acres with nature trail and physical fitness trail.

Forestville Dead River Public Access Site: Five acres with boat launch on Dead River.

Little Garlic River Public Access Site: Fishing access site.

Ishpeming Township

- **Ishpeming Township:** Seven acres with softball diamond, Little League diamond, tennis courts, pavilion, Tot Lot, restrooms, concessions, playground, horseshoe court, shuffleboard, volleyball court, basketball court, picnic table, and grills.

Negaunee Township

- **Negaunee Township Park:** 71-acres with basketball court, pavilion, warming building, concessions, playground area, Little League field, Babe Ruth Baseball Field, softball field, tennis court, cross-country ski trail, picnic tables, snowmobile trail access.
- **Michigan Mining Museum:** 30-acres with exhibits of early iron ore mining artifacts, audio-visual programs, and outdoor interpretive paths.
- **McClure Storage Basin Access Site:** Hard-surface launch ramp, toilets, and parking area. Site is 1.03 acres.

- **Hoist Basin Access Site:** Hard-surface launch ramp, toilets, and parking area. Site is 1.82 acres.

Richmond Township

Richmond Township Park: Horseshoe court, basketball court, tennis courts, baseball field, playground, picnic area, pavilion and restrooms.

Tilden Township

Tilden Township Recreation Complex: Six acre site with tennis courts, baseball field, horseshoe courts, basketball court, playground area, pit toilets, parking, picnic area and pavilion.

Sands Township

Blueberry Ridge Pathway: Trail system (cross-country skiing, mountain biking, and hiking).

Marquette County Fairgrounds: 60 acre site with exhibition building, American Legion building, 4 H Building, 2 cattle show rings, horse barn, poultry and small animal building, large livestock building, office building, barrier-free restroom/utility building, 2 storage structures, power outlets, 2 wells, large lighted parking area, outside speaker system, ½ mile oval race track, mud drag strip, paved go-cart track, large carnival area, outside horse stall, 2 outdoor pavilions, and portable bleachers.

See Appendix A for Maps

Maps found in Appendix A include the following:

- Location Map
- “Natural Resources Map” shows areas designated for natural resource conservation and recreation
- “Teal Lake Trails Loops” shows beginner, intermediate, and advanced cross country skiing trails. These trails are used for local, collegiate, and international cross-country ski races.
- “Trails” map shows various trails beginning in the city limits and extending out into adjoining areas.

4.0 DESCRIPTION OF PLANNING AND PUBLIC INPUT PROCESS

The City of Ishpeming is developing a Public Participation Plan, as part of the Redevelopment Ready Communities (RRC) certification program. This Public Participation Plan is not yet completed; however, we expect to complete the Public Participation Plan in 2018. Once completed the City will follow the guidance of this plan for gathering public input. Currently, the public input process used for this Recreation Plan was to gather public input via a survey; to receive public comments during a 30 day period with copies of the draft plan at multiple locations and online at www.ishpemingcity.org; conduct two focus group sessions to gather input; conduct several advertised public meetings to obtain input and discuss the plan; and conduct a final public hearing prior to City Council action. Also, the City used social media and the City's website to invite participation in the planning process and solicit public input. Finally, all planning events and special meetings to discuss recreational opportunities and plans were advertised in a major regional newspaper, the Mining Journal. See Appendix F for documentation of the public participation process.

4.1 Community Data

The following data was compiled from various sources. It reflects the most up to date and accurate information available.

4.1.1 Population

Population trends in our area are mixed (see charts below). Like most places in America, our "baby-boom" generation continues to age, increasing the component of senior citizens. However, young families have moved into the community due to career opportunities with local industries like mining and logging, and also due to high quality of life and exceptional recreational opportunities in our area. The influx of younger families has kept your generational demographic more balanced than many small communities. Marquette County and the City of Ishpeming have experienced declines in total populations as mine closures have reduced the work force. The population trends are shown in Table 4-1.

Table 4-1
Population Trends, 1990-2010
Selected Areas

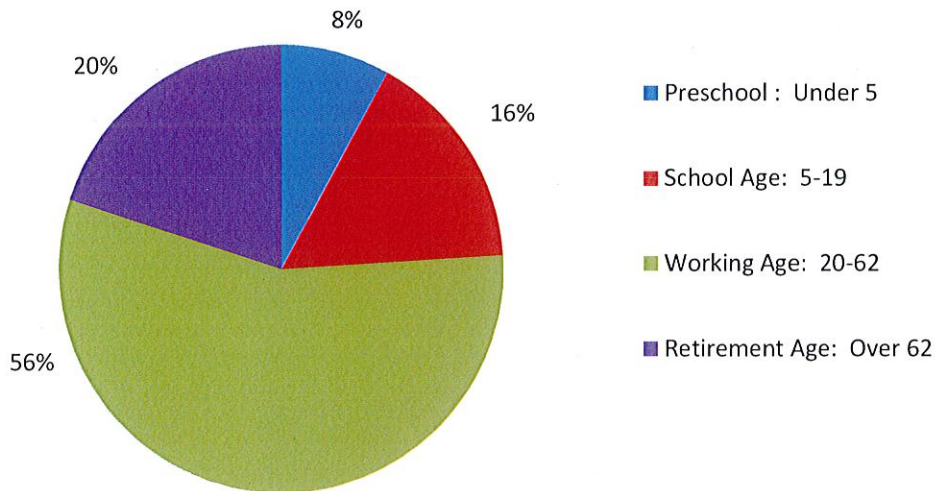
| Area | 1990 | 2000 | 2010 | % Change 1990-2010 |
|-------------------|-----------|-----------|-----------|-----------------------|
| City of Ishpeming | 7,200 | 6,686 | 6,500 | - 9.7% |
| Marquette County | 70,887 | 64,634 | 67,178 | - 5.2% |
| State of Michigan | 9,262,044 | 9,938,444 | 9,897,264 | 6.5% |

4.1.2 Age Characteristics

The age variation of the residents indicates a continued need for recreational facilities.

Age Distribution in Ishpeming: as of 2016

Source: US Bureau of the Census



The median age of Ishpeming residents was 38.9 in 2010 (2008-2012 five year survey). Over half of the population is in the working age category (age 20-62).

4.1.3 Gender

The majority of the population in the City of Ishpeming is female (53.6%).

4.1.4 Economic Characteristics

For most of the City of Ishpeming and Marquette County's history, the economy was principally based on the iron ore mining industry. Mining on the Marquette Iron Range goes back over 150 years. In the late 1800's and early 1900's, iron ore mining was by far the dominant industry within the City and the County. However, in the latter half of the 1900's, the mining industry lost some of its economic dominance within the County, with the closing of several mines along the Iron Range. Today, only one large iron mine remains in operation within the County, the Tilden Mine (in Tilden Township and Richmond Township). This mining operation is owned by Cleveland Cliffs Industries (CCI). The iron ore from the mine is shipped via railroad to either Presque Isle Harbor in Marquette or Escanaba for loading on lake ore carriers and delivery to various steel mills. There are about 1,200 individuals currently employed at the mine. The Cities of Ishpeming and Negaunee serve as living areas and commerce centers for the area. A CCI Research Laboratory for the mine is located within the City. This facility has about 30 employees.

The long-term future of the iron ore industry within Marquette County is somewhat predictable. Eventually, significant high quality deposits of iron ore will be exhausted. Exactly when this occurs will depend on the demand for steel and steel products, popularity of steel substitute materials, international competition, federal governmental trade policies, labor productivity, availability and price of electric power, environmental constraints, and other considerations. However, according to information provided by CCI,

iron ore mining will continue at the Tilden mine for the next two decades. Given this continuity, the area's economy will probably be stable during that period of time.

A significant new mining development in the area has been the Eagle Mine. This mine, located about 20 miles north of the City of Ishpeming, began production in 2015 and produces mostly nickel and copper ore. This mine employs about 200 people, along with 200 contract workers.

Other possible new mining ventures in our area have been identified. However, due to economic conditions and regulatory control, it is uncertain if they will actually be allowed to open for operation at any point in the near future.

Currently, the economy within the City's corporate limit is most influenced by the service and retail trade sectors, which accounts for about 1400 jobs total. The City of Ishpeming, along with the cities of Negaunee and Marquette, serve as the retail trade and service center for Marquette County and nearby communities outside of the County. The top three largest employers in the City are Bell Hospital (a part of the UP Health System) with about 300 employees, the Marquette County Medical Care Facility (Valenti Center) with about 230 employees, and the Ishpeming School District with about 110 employees. The service and retail trade sectors are the strongest economic sectors in the area and have experienced the greatest growth in the number of jobs in the past decade. Much of this growth can be attributed to an increase in the number of visitors to the Ishpeming/Negaunee area. The promotion of tourism has become an important focal point for many businesses and governmental units within the area.

For the most recent measurement period, 2011-2016, the per capita income for the City of Ishpeming was about \$21,000, which was lower than the per capita income levels for the County and State. The City has enjoyed an increase in per capita income since 2010 after adjusting for inflation, along with both the County and State. The City's average income level increased by about 5 percent during this period.

4.1.5 Area Physical Characteristics

The City's elevation is at 1,436 feet above mean sea level and over 800 feet higher than Lake Superior. The City's name is from Native American Indian for "high place," because the location is along the geographical high point between Lake Superior and Lake Michigan. The topography of the southern half of the City is hilly with large rock outcroppings and several lakes (which were formerly mine pits that have filled with spring water). The northern half is characterized with gently rolling hill terrain with some rock outcroppings. A substantial part of the southeastern portion of the City has slopes greater than 10 percent. Water resources within the City's corporate boundaries include Lake Bacon, Lake Angeline, Teal Lake, Lake Bancroft, Cedar Lake, Gunpowder Lake, Grass Lake, Miller Lake, Little Lake, Carp Creek, Ely Creek, and Partridge Creek.

The predominate soil association type within the City limits is the Tilden-Michigamme-Rock Outcrop Association, characterized by rock outcrop and very deep and moderately deep, gently rolling to very hilly, well drained loamy soils on bedrock controlled moraines. The only other soil association found in the City is the Pits-Dumps-Mine-Slickens-Association, which is located in the south-central portion of the City. This area is the site of an inactive iron ore mining operation.

The Climate in the City is humid continental that is heavily influenced by Lake Superior, with cool late springs and early summers and warm late falls and early winters. However, during the late winter and early spring, once ice builds up on Lake Superior, the City is subjected to climate more closely associated with interior locations. The City's mean monthly temperature ranges from 13.7 degrees Fahrenheit in January to 66.1 degrees Fahrenheit in July, with a mean annual temperature of 41.0 degrees Fahrenheit. Total precipitation in the City averages 31.87 inches per year. The City averages 142 days per year with one inch of snow or more on the ground. The frost free growing season is about 109 days.

4.1.6 Land Use

The current land use inventory of the City of Ishpeming indicates that 1,966 acres of land is in forest use, or 33 percent of the City's total land use. In terms of total acreage, this land use category is followed by non-forested and single family, duplex uses, which consume 1,564 and 766 acres, respectively.

4.1.7 Transportation System

U.S. Highway 41/M-28 is the major east-west thoroughfare through the City of Ishpeming. It links the City to the Cities of Negaunee and Marquette to the east with the Keweenaw Peninsula and other points in the western end of the Upper Peninsula. U.S. Highway 41/M-28 is an important corridor in the central U.P. for most long-haul transportation needs, especially forest products, mining ore, and finished products for businesses in the U.P., lower Michigan (via the Mackinaw Bridge), Wisconsin, and Minnesota. U.S. 41/M-28 also serves as the main commuting route for City residents that work in Ishpeming, Negaunee, and Marquette.

International commercial air passenger service is provided to regional residents at the Sawyer International Airport located in Sands Township (formerly Marquette County Airport). This airport facility is owned and operated by Marquette County.

Rail service in the City is provided by Canadian National Railways (CN). CN has a small railyard in Ishpeming, adjacent to U.S. 41.

Bus service is operated locally by Marq Trans, the regional transportation system. Marq Trans also links bus service via Indian Trails and other national carriers.

4.2 Recreation Standards

One method to assess community recreation needs is the standards system. Standards that have been developed by the National Recreation and Park Association (NRPA) provide a scale against which an existing recreation system can be measured so the guidelines for future needs can be created. Standards link the number of acres to the community's population.

4.2.1 Suggested Facility Development Standards

The Michigan Department of Natural Resources, Grants Management Division "Guidelines for the Development of Community Park, Recreation, Open Space, and Greenway Plans" includes a table of suggested facility development standards which can be found in Appendix B.

A direct comparison of the suggested facility development standards to the existing facilities in the City of Ishpeming is shown below.

Comparison of Existing Recreational Facilities to Suggested NRPA Standards
City of Ishpeming

| Activity/Facility | No. of units per population | Standard required for area | No. of Existing Facilities | Deficiency per Standards? |
|-------------------|-----------------------------|----------------------------|----------------------------|---------------------------|
| Badminton | 1 per 5000 | 1.3 | 0 | Yes |
| Basketball | 1 per 5000 | 1.3 | 19 | No |

Comparison of Existing Recreational Facilities to Suggested NRPA Standards
City of Ishpeming

| Activity/Facility | No. of units per population | Standard required for area | No. of Existing Facilities | Deficiency per Standards? |
|--|--|----------------------------|----------------------------|---------------------------|
| Handball (3-4 wall) | 1 per 20,000 | 0.3 | 0 | Yes |
| Ice Hockey | Indoor- 1 per 100,000 Outdoor- Depends on climate | 0.07 | 0 | Yes |
| Tennis | 1 court per 2000 | 3.3 | 11 | No |
| Volleyball | 1 court per 5000 | 1.3 | 1 | Yes |
| Baseball | 1 per 5000 | 1.3 | 8 | No |
| 1. Official | | | | |
| 2. Little League | Lighted- 1 per 30,000 | 0.2 | 2 | No |
| Field Hockey | 1 per 20,000 | 0.3 | 0 | Yes |
| Football | 1 per 20,000 | 0.3 | 1 | No |
| Soccer | 1 per 10,000 | 0.6 | 0 | Yes |
| Golf-driving range | 1 per 50,000 | 0.1 | 0 | Yes |
| ¼ - Mile Running Track | 1 per 20,000 | 0.3 | 1 | No |
| Softball | 1 per 5,000 (if also used for youth baseball) | 1.3 | 8 | No |
| Multiple Recreation Court (Basketball, Volleyball, Tennis) | 1 per 10,000 | 0.6 | 5 | No |
| Trails | 1 system per region | N/A | 1 | No |
| Archery Range | 1 per 50,000 | 0.1 | 0 | Yes |
| Combination Skeet and Trap Field (8 station) | 1 per 50,000 | 0.1 | 0 | Yes |
| Golf | | | | |
| 1. Par 3 (18-hole) | | • - | 0 | Yes |
| | • -- | | | |
| 2. 9-hole standard | • 1/25,000 | • 0.3 | 0 | Yes |
| | | • 0.1 | 0 | Yes |
| 3. 18-hole standard | • 1/50,000 | | | |
| Swimming Pools | 1 per 20,000 (Pools should accommodate 3% to 5% of the total population at a time.) | 0.3 | 1 | No |
| Beach Areas | NA | NA | 1 | No |

4.2.2 Recommended Classification System for Recreation Open Space and Trails

The Michigan Department of Natural Resources, Grants Management Division “Guidelines for the Development of Community Park, Recreation, Open Space and Greenway Plans” includes a table of a recommended classification system for local and regional recreation open space and trails which can be found in Appendix C. On the next page is a table of the City’s park acreage in various categories compared to the DNR standard.

Mini Parks

| Facility Name | Acreage | Standard Acreage |
|--------------------------|---------|------------------|
| Senior Citizen Park | 5 | |
| Senior Center Park | 1 | |
| Power of Ten Pocket Park | 1 | |
| Total Mini Park Acreage | 7 | 2 to 4 |

Neighborhood Parks

| Facility Name | Acreage | Standard Acreage |
|---------------------------------|---------|------------------|
| Marquette Street Playlot | 1 | |
| Second Street Playlot | 1 | |
| Barnum Playlot | 11 | |
| Lake Angeline Playlot | 1 | |
| Wabash Playlot | 1 | |
| Salisbury Playlot | 1 | |
| Palms Area Playlot | 1 | |
| Mather "A" Ball Field | 1 | |
| Holmes Playlot | 1 | |
| Birchview Elementary School | 2 | |
| Vasa Park | 0.5 | |
| Total Neighborhood Park Acreage | 21.5 | 7 to 14 |

Community Parks/Museums

| Facility Name | Acreage | Standard Acreage |
|------------------------------|---------|------------------|
| City Playground | 56 | |
| Lake Bancroft Park | 4 | |
| Ishpeming High School | 5 | |
| Senior Citizen Center | 1 | |
| National Ski Hall of Fame | 1 | |
| Total Community Park Acreage | 67 | 36 to 58 |

Regional Parks

| Facility Name | Acreage | Standard Acreage |
|-----------------------------|---------|------------------|
| Al Qua'al | 460 | |
| Total Regional Park Acreage | 460 | 58 to 72 |

4.2.3 National Park and Recreation Standards for Park Acreage

The National Park and Recreation Association has suggested standards for park size and type based on the population of the area. No standards exist to determine how much open space a community needs, however, these standards can be used as guidelines in the planning process. Appendix D includes a table of these suggested standards. Per the suggestion of DNR, rather than seeing "the parks in the city," the City of Ishpeming prefers to look at the City within the broader natural park of our wonderful natural setting.

Nevertheless, the City of Ishpeming possesses over 600 acres of Public Park and other undesignated recreation land. The breakdown of this recreational land includes over seven acres of mini parks, 22 acres of neighborhood parks, 67 acres of community parks, and 460 acres of regional parks. Comparing the NPRA standards with the number of acres of recreational land found in the City, the City has excess acreage of land in all four of the park and recreation types. The City is very fortunate to have extensive acreage of recreational land.

4.2.4 Barrier Free Accessibility Requirements for Parks

The barrier free accessibility requirements for parks is provided in Appendix E.

4.3 Systems Approach to Planning

The systems approach to planning incorporates information gained from citizen surveys and detailed recreation inventories to determine the recreation needs of a community. Also, as mentioned above, the City of Ishpeming is developing a Public Participation Plan, as part of the Redevelopment Ready Communities (RRC) certification program. This plan is not yet completed; however, we expect to complete the Public Participation Plan in 2017. Once completed the City will follow the guidance of this plan for gathering public input as part of the system approach to planning. Currently, the public input process used for this Recreation Plan was to conduct two public hearings, and several public meetings to obtain public input. Also, social media and the City website were used to invite participation in the planning process and solicit public input.

4.3.1 The Public Input Process

The Iron Ore Heritage Recreation Authority (IOHRA), the Ishpeming Downtown Development Authority, and the City of Ishpeming joined forces and funding to bring Michigan State University (MSU) to Ishpeming to conduct a Sustainable Built Environment (SBE) public engagement and planning process for Cliffs Shaft Mine Museum and Lake Bancroft Park. The goal of this SBE process is to make tangible improvements at this site which is adjacent to the Iron Ore Heritage Trail. This SBE planning process was conducted via three public workshop sessions during 2016 (May, August, and December). During the three sessions, about 145 people participated in the creative SBE process to develop recreational and community improvements for this area. This SBE process generated tremendous results which are fully documented in the three reports from the SBE process, including the final report, dated December 1, 2016. MSU students and professors, City staff members, Ishpeming High School students, Marquette County government representatives, private citizens, volunteer boards, committees, and commissions all participated in the SBE planning process which lead directly to this updated recreation plan. Also, the Central Upper Peninsula Planning and Development (CUPPAD) Regional Commission participated in our planning process.

In addition, during a 30 day public review period, the City of Ishpeming held a public hearings (on February 13, 2018) to finalize public comments regarding this recreation plan. The meeting minutes from these public hearings can be found in Appendix F.

Also, in addition to the public input listed above, the City hired GEI, Inc. to develop a non-motorized trail plan for the City as part of a Health Department Grant program. While this trail plan is still in development, the planning process is helping to guide the City's efforts to enhance recreational trails and the trail user experience. Elements of the draft plan have been included in this Recreation Plan.

Finally, considerable effort was made to engage the public through various methods which are documented in Appendix F. The City of Ishpeming issued a two page survey to all residential addresses in the City (approximately 2,300). About 200 responses were received and these are tabulated in Appendix F, along with a one-page analysis of the results. In addition two focus groups were held to gather important information from stakeholders: Range Area Mountain Bike Association and The Lake Bancroft Area Development Committee. Finally, the City's website and social media were used to collect input. This Recreation Plan was available to the public on the City website, at the City Public Library, at the Senior Center, and at City Hall.

5.0 GOALS AND OBJECTIVES

5.1 2018-2022 Goals

The Ishpeming Community Recreation Plan continues to focus on recreational trail development, trail maintenance, and improved trail user experience in 2018 to 2022. However, two new objectives have also been introduced: improvement of the City's central Tennis Court Facility and creation of a downtown multi-purpose park. These two new goals have been added to this plan due to public input and a wide-spread public consensus on the need for these two facilities. More details about these two new objectives are described below. Despite these two new goals, the focus on trails remain an abiding priority for the community, including green infrastructure development for non-motorized and multi-use trails connecting across community boundaries and to key destinations inside the City of Ishpeming, especially near school facilities. Continuous development and improvement of our trail system is being effectively accomplished through joint planning and community partnerships with adjacent governmental agencies, including the Iron Ore Recreational Authority and the Central Upper Peninsula Planning and Development (CUPPAD) Regional Commission, with private business partnerships, with the active participation of several volunteer organizations such as RAMBA, and with the Ishpeming School District. Improvement and expansion of non-motorized trails provides better "walk-ability and bike-ability" for our community. It also provides for economic development and a more attractive "sense of place." Finally, in giving the trail user a better network and experience, we create a higher quality of life for residents--including school students for whom health and physical fitness habits will establish a lifetime of benefit--and for visitors to the City of Ishpeming. It is the primary recreational goal of the City to continue to expand the existing trail systems (connecting more attractions to the Iron Ore Heritage Trail and other key destinations in the community) and significantly improve the trail user's experience with new links and improved trail amenities.

Specific Objectives

- A. The first priority objective for this plan is to renovate a community tennis court complex built in 1974. A group of citizens has banded together to raise private donations to help accomplish this goal. Due to deteriorated conditions, the current tennis courts are not safe. The tennis courts need to be rebuilt to provide a safe and useful facility.
- B. The second priority is to continue planning and to obtain land to create a multi-purpose downtown park. This plan includes an intent to make an application to DNR for funding to acquire downtown property specifically for this purpose. The downtown park envisioned would provide for seasonal ice skating, a skate park, green space, public restrooms, and other public amenities. Once the property is acquired, appropriate design and development will take place.
- C. The third priority is connecting the city's trail network between Second Street and Empire Street. The City owns this property. It contains a partially developed trail, connecting large residential areas to important recreational facilities and natural resources. This link will help connect the Iron Ore Heritage Trail, the "City Playground" (item #1 on page 4), and other trails. The objective is to create this trail connection with a paved recreational trail.

- D. A fourth objective is to improve trail amenities. Additional wayfinding, interpretative signage, and physical exercise stations along trails and trail connectors will be created to aid trail users in finding destinations, recognize unique and interesting natural features, promote physical fitness, and encourage educational excellence. Northern Michigan University has agreed to assist the city with information content for and design of these trail stations. It is hoped that these amenities will inform trail users about important natural features and encourage enjoyment and conservation of them. Funding from private sources will be used to create these stations.
- E. Finally, the fifth priority objective is to improve trail and recreational facility maintenance efficiency. The Ishpeming Department of Public Works (DPW) continues to maintain all our City park facilities, including trails. Due to budgetary constraints, it is essential that all improvements be made in a manner that will minimize the life-cycle maintenance costs of facilities. Therefore, we seek to make all project as durable and low-maintenance as possible. To that end, design guidelines, including universal access elements are included in all plan characteristics, including material selection, site quality, and utility connections.

5.2 Identified Recreational Needs

- A. The City of Ishpeming is a member of the Iron Ore Heritage Recreation Authority (IOHRA). We continues to support and work closely with the IOHRA to develop and improve non-motorized trails and multi-use trails in this region. We continue to believe that the IOHRA mission will benefit the City of Ishpeming in multiple ways and continued progress fulfills many recreational needs through trail links and trail development. The next specific trail link in the plan for trail improvements is the trail link identified above in paragraph C. Other trail connections and links are envisioned to meet the basic need of a robust non-motorized transportation system.
- B. The Tennis Court Project is located at the “Playground” entry way into the communities primary sports complex. In addition to correcting the unsafe condition of the existing courts, other new facilities are needed in this area to create a modern, efficient, and enjoyable facility for traditional sports, such as football, baseball, and track/field activities. These new facilities are essential to our community’s vision of health, recreation, and socialization. As mentiuned a groups of citizens has banded together to raise funds for the Tennis court project. This same group is also raising funds for the additional new facilities. Depending on funds raised and future grant awards, additional facilities may be created.
- C. Continued general trail planning is necessary for better future trail development in the community. Using grant funding from the Marquette County Health Department, the City continues to refine non-motorized trail plans. Some additional ideas for future trail development include:
 - 1. A recreation facility located on a rock bluff on the west side of the Hematite Heights property. The envisioned trailhead and trail construction will connect existing neighborhoods (Wabash Heights, Third Addition, New York Location) to existing trails in the Hematite Heights area. Proposed development includes a parking lot, accessible multi-use trail to two scenic overlook sites, accessible neighborhood connection trails, rustic trail development, interpretive signage, constructing two accessible overlook sites and two overlooks along the rustic trail. The project would also integrate and preserve the existing mountain bike trails already on the bluff.
 - 2. Development of the “Little Mountain” Mine site as a destination for recreation and historic tourism. This site is located on City-owned land about 200 yards north of the Iron Ore Heritage Trail (IOHT). Actual historic mine equipment, visible mining areas, and high grade ore

material in the rock formations are available at this location. With narrative signage and access via a paved trail, this site could become a fantastic side-stop along the IOHT.

3. A proposed commercial Senior Housing Development project (30-40 units) is being planned for the site of the former Bell Hospital. This site is about 100 yards from the IOHT. Trail user amenities located here would benefit both the Senior housing residents but also IOHT users.
4. The section of land on the north side of Teal Lake in which the City, in partnership with neighboring communities, acquire with help from DNR is in need of additional development to achieve its full potential. While it is important to maintain the rustic and wilderness character of this special place, it should be accessible to the public.
5. The City plans to complete the work on a new 18 Hole Disc Golf Course in the Al Quaal Recreational Area as funding allows.

5.3 Other recreational needs that have been identified in this plan include:

- A. To complete the work on a new 18 Hole Disc Golf Course in the Al Quaal Recreational Area as funding allows
- B. To add ADA handicapped accessible parking space in Al Quaal and other locations
- C. Create at least one soccer field in the City

5.4 The City Council, City Planning Commission, Parks and Recreation Commission, the Downtown Development Authority, IOHRA Board, and other stakeholders will be considering these projects for possible implementation to meet community recreational and resource preservation needs.

5.5 The Parks and Recreation Commission supports the efforts of the City and the Lake Bancroft Committee to clean up the shoreline and restore the water quality at Lake Bancroft. Phase I consists of efforts to reduce suspended sediment. Phase 2 is to create a viable fish habitat.

Section 6 Action Program

The City's program for implementation is shown in the following table (Table 6-1).

**Table 6-1
Action Program
City of Ishpeming**

| Project | Year | Cost (Funding Source) |
|---|---------------|-------------------------------------|
| 1. Tennis Court Improvement Project | 2018 | \$400,000 (Donations/Grants) |
| 2. Trail Link between Empire and Second Street | 2019 | \$150,000 (Donations/Grants) |
| 3. Acquire land for multi-purpose downtown park, includes ice rink, skate park, public restrooms, landscaping, and site history | 2019 | \$250,000 (City/Grant) |
| 5. Athletic Complex Improvements | 2020 | \$5,000,000 (Private Donations) |
| 6. Downtown and Al Quaal Multi-use Trail Connectors/Loops | 20XX | \$750,000 (City/Sponsor/Grant) |
| 7. Develop Second Tube Slide at Al Quaal | 20XX | \$70,000 (City/Grant) |
| 8. Move and Reconstruct Toboggan Slide | 20XX | \$50,000 (City/grant) |
| 9. Purchase Park Land and/or Water Front Property | Opportunistic | ? |
| 10. Install Ice Rink at Al Quaal | 20XX | \$20,000 (City) |
| 11. Mountain Bike Trail Development | 20XX | \$10,000 (City/Grant) |
| 12. Establish a New Large Playlot at Al Quaal | 20XX | \$200,000 (City/Service Club/grant) |
| 13. Construction of a Paved Roller Ski Loop at Al Quaal | 20XX | \$150,000 (City/CCI/NMU/Grant) |
| 14.. Develop North Shore of Teal Lake | 20XX | \$150,000 (City/Grant) |
| 15. Trail Connecting Bell Hospital | 20XX | \$250,000 (City/Sponsor/Grant) |
| 16. Install new equipment at City Owned Playlot sites | 20XX | \$250,000 (City/Grant) |
| 17. Camp Sites or Cabins at Al Quaal | 20XX | \$200,000 (City/Grant) |
| 17. 18 Hole Disc Golf Course in the Al Quaal Recreational Area | 20XX | \$25,000 |
| 18. Historic Mine Pit Viewing Areas (Little Mountain Mine Site) | 20XX | \$150,000 |
| 19. Historical Sites Signage– Walking Routes | 20XX | \$50,000 |

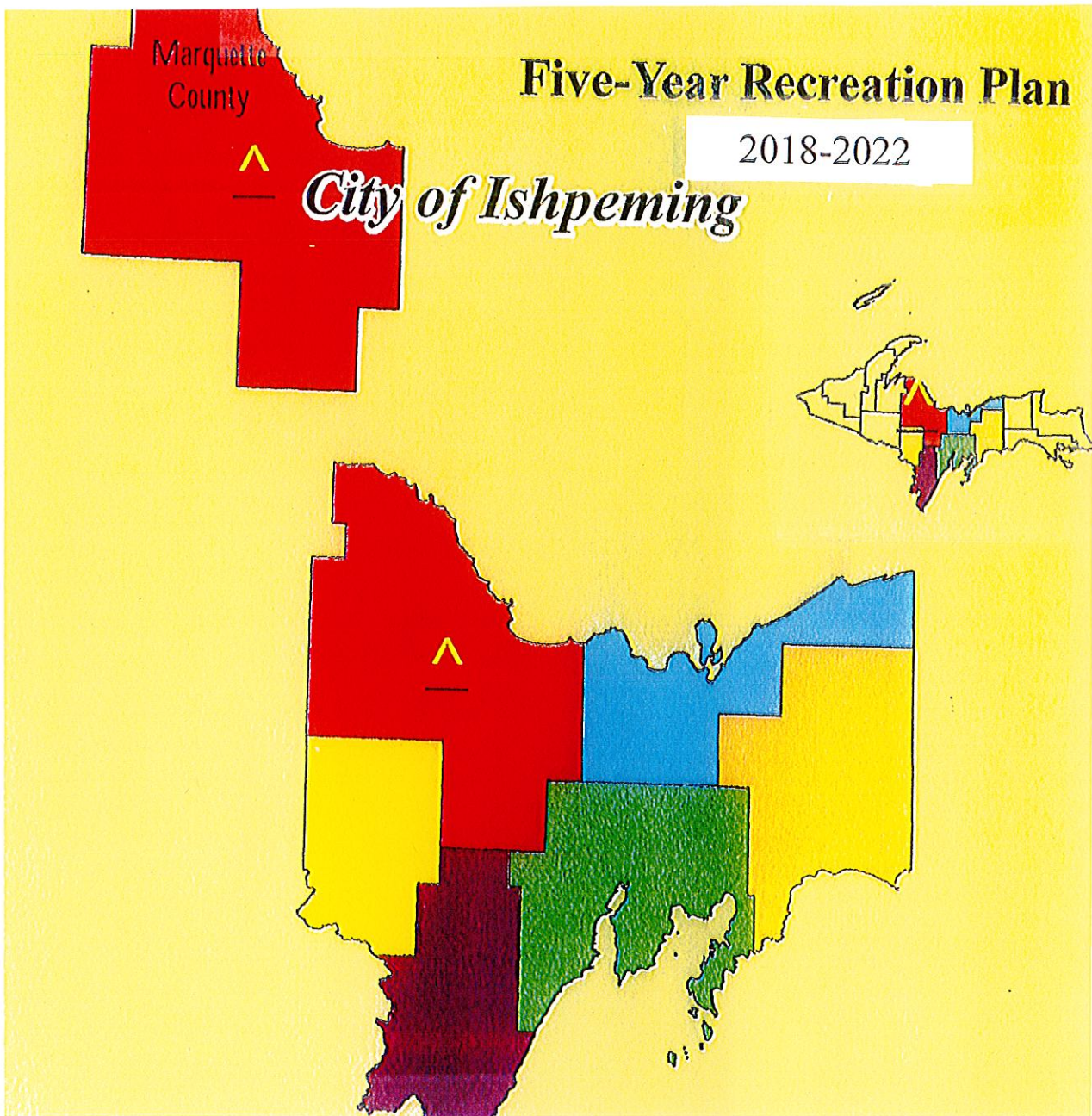
APPENDIX A

MAPS

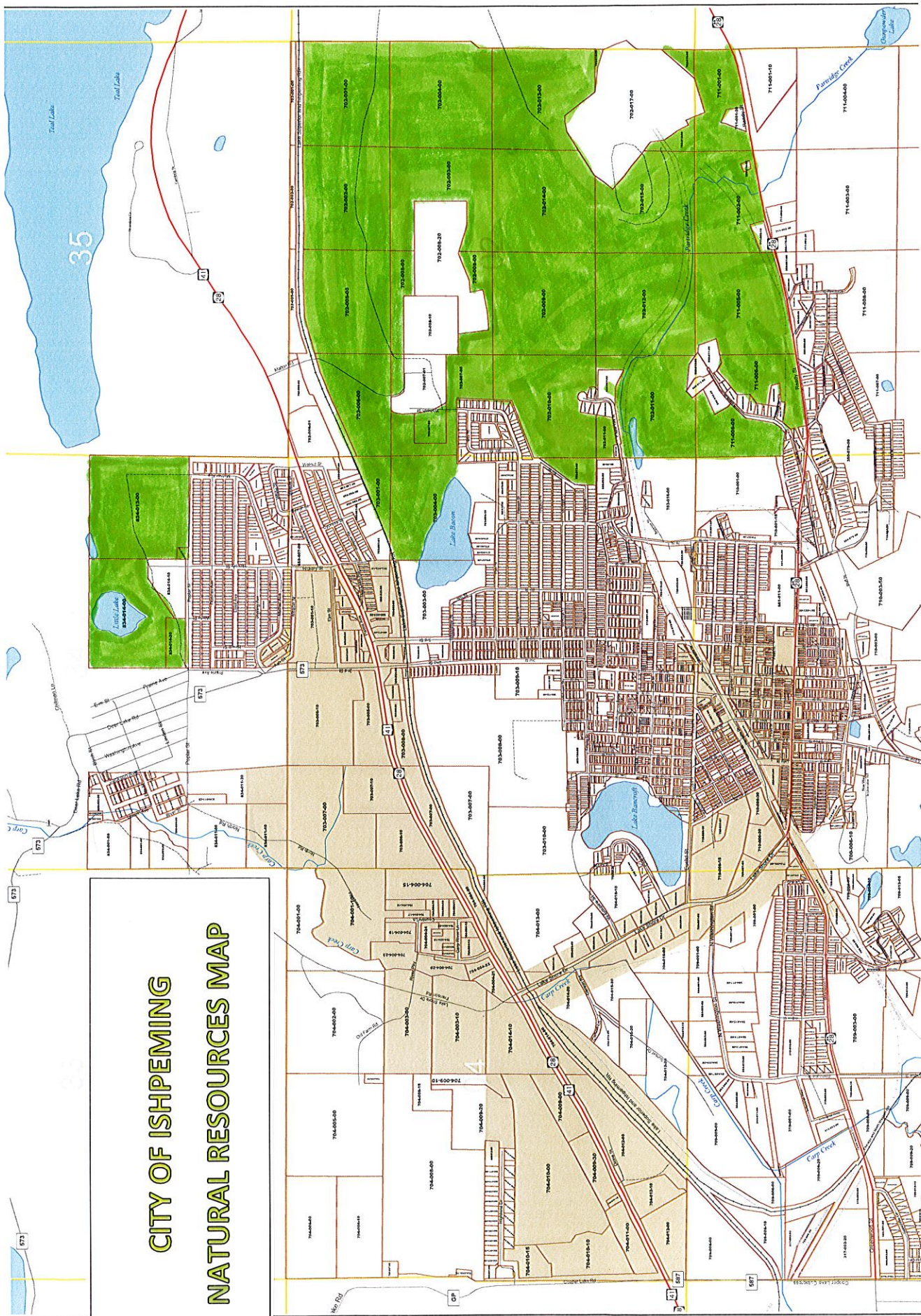
Maps found in Appendix A include the following:

- Location Map
- “Natural Resources Map” shows areas designated for natural resource conservation and recreation
- “Teal Lake Trails Loops” shows beginner, intermediate, and advanced cross country skiing trails. These trails are used for local, collegiate, and international cross-country ski races
- “Al Quaal Trails” map shows various trails beginning in Al Quaal Recreation Area, extending out
- “Area Trails Map” shows various trails, including snowmobile routes, ATV/ORV, and non-motorized trails

Location Map



CITY OF ISHPEMING NATURAL RESOURCES MAP



Teal Lake Trail Loops

(Lit until 10pm for evening skiing)

— Beginner/Warm Up - 1.5km

- - - Intermediate - 3.5km

— Advanced - 5km

Teal Lake

Deer Lake

Teal Lake

Negunee

Ishpeming

TH

Hickory St

41

28

FOR TRAIL INFO:

- Cemetery/Parks Office
(906) 486-6181

TRAIL PASSES AVAILABLE AT:

- US Ski & Snowboard Hall of Fame
610 Palms Ave (US-41)
- Wilderness Sports
107 E Division St
- Ishpeming City Hall
100 E division St

(NTN season passes available at any NTN pass outlet)

Beginner/Warm Up

TH

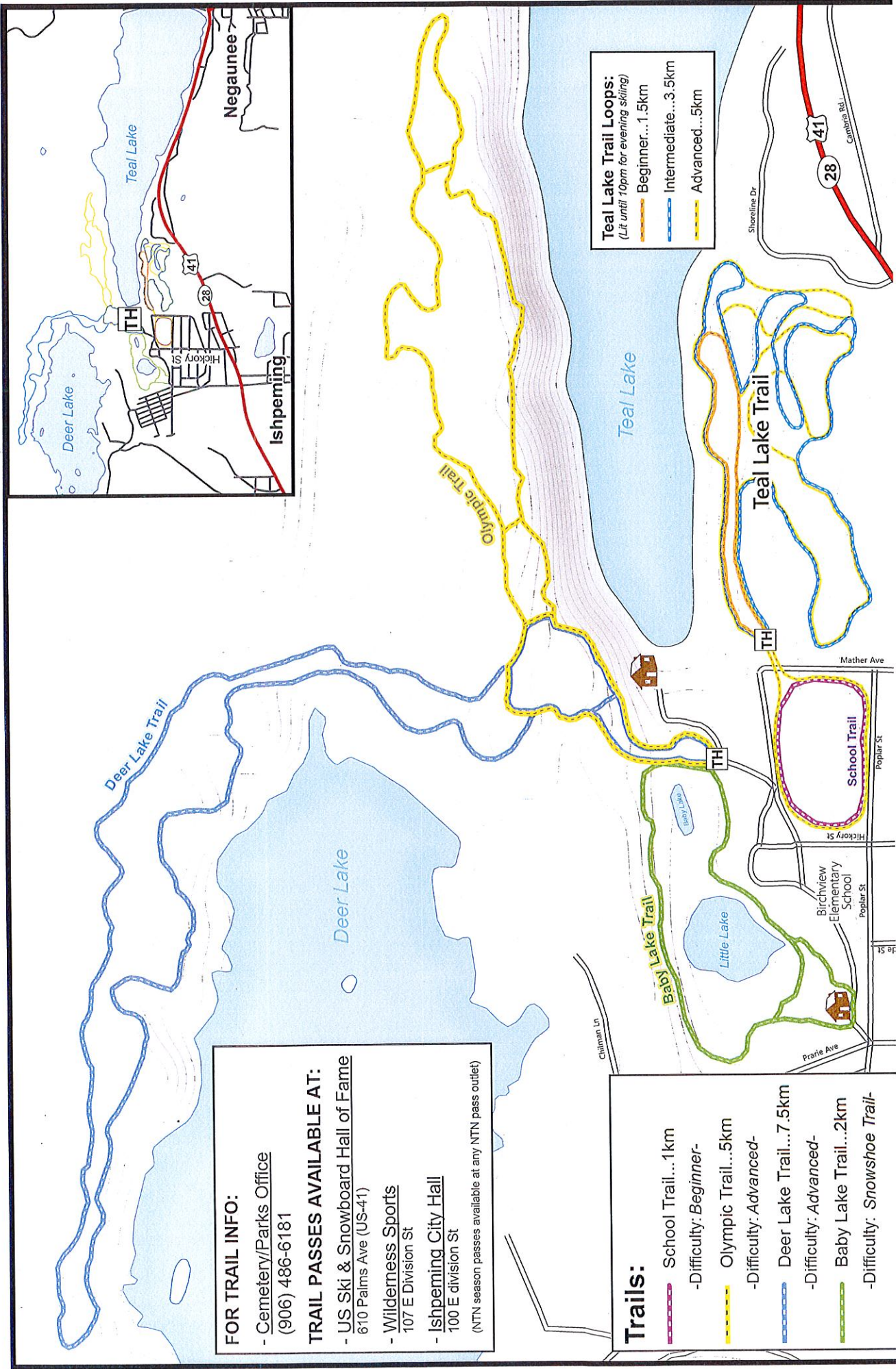
Mather Ave

Hickory St

Poplar St

Intermediate Loop

Advanced Loop

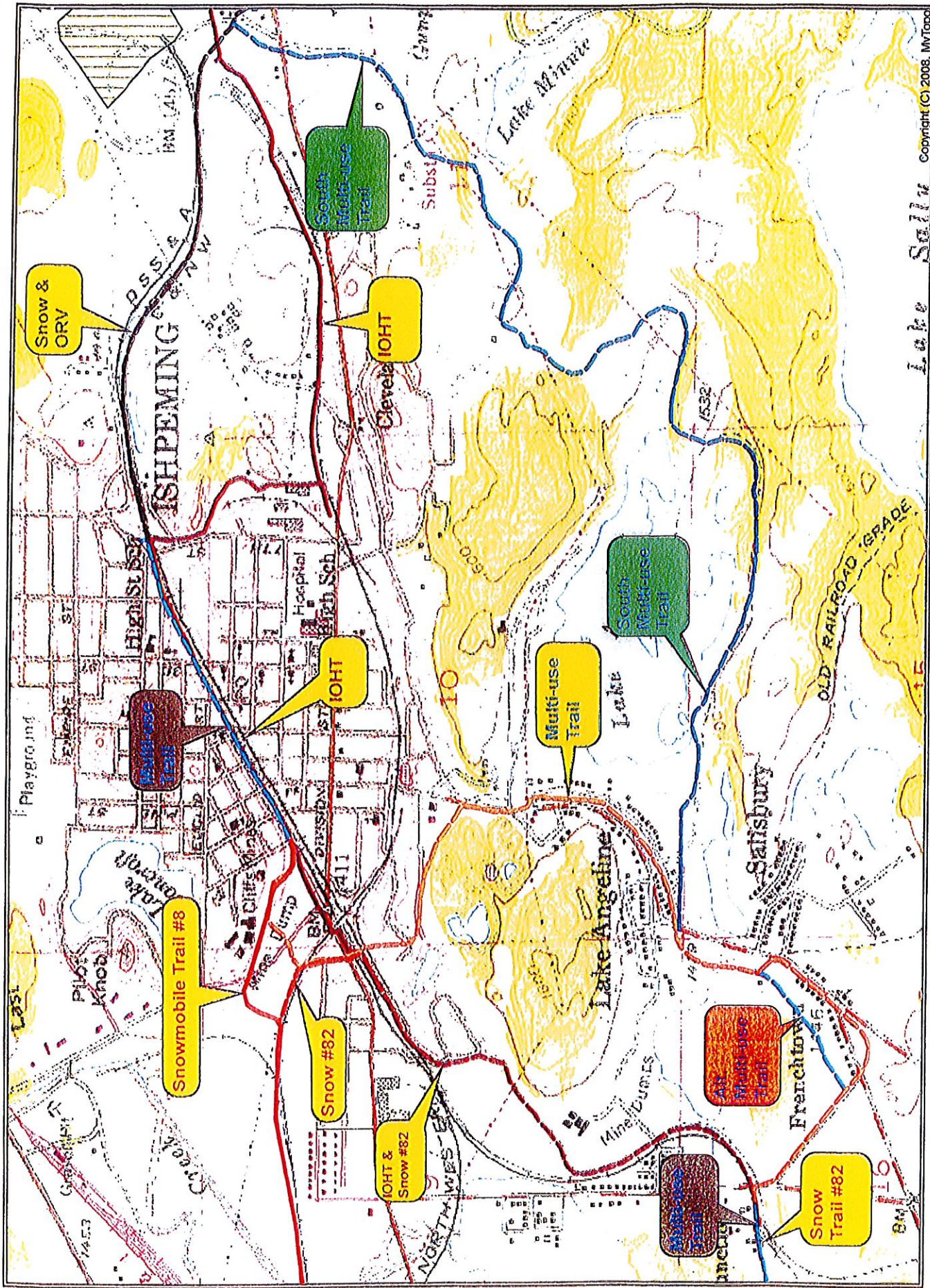


FOR TRAIL INFO:
- Cemetery/Parks Office
(906) 486-6181

TRAIL PASSES AVAILABLE AT:
- US Ski & Snowboard Hall of Fame
610 Palms Ave (US-41)
- Wilderness Sports
107 E Division St
- Ishpeming City Hall
100 E Division St
(NTN season passes available at any NTN pass outlet)

Teal Lake Trail Loops:
(Lit until 10pm for evening skiing)
- Beginner...1.5km
- Intermediate...3.5km
- Advanced...5km

Trails:
- School Trail...1km
- Difficulty: Beginner-
- Olympic Trail...5km
- Difficulty: Advanced-
- Deer Lake Trail...7.5km
- Difficulty: Advanced-
- Baby Lake Trail...2km
- Difficulty: Snowshoe Trail-



Area Trails Map

APPENDIX B

**NATIONAL RECREATION AND PARK ASSOCIATION
SUGGESTED FACILITY DEVELOPMENT STANDARDS**

**NATIONAL PARK AND RECREATION ASSOCIATION
Suggested Facility Development Standards**

| Activity/Facility | Recommended Space Requirements | Recommended size and dimensions | Recommended orientation | No. of units per population | Service Radius | Location Notes |
|---|---|---|---|--|--------------------------|---|
| Badminton | 1620 sq. ft. | Singles – 17' x 44' Doubles – 20' x 44' With 5' unobstructed area on all sides. | Long axis north – south. | 1 per 5000 | ¼ - ½ mile | Usually in school, recreation center or church facility. Safe walking or biking access. |
| Basketball 1. Youth 2. High School 3. Collegiate | 2400–3036 sq. ft. | 46'-50' x 84' | Long axis north – south. | 1 per 5000 | ¼ - ½ mile | Same as badminton. Outdoor courts in neighborhood and community parks, plus active recreation areas in other park settings. |
| | 5040-7280 sq. ft. | 50' x 84' | | | | |
| | 5600-7980 sq. ft. | 50' x 94' with 5' unobstructed space on all sides | | | | |
| Handball (3-4 wall) | 800 sq. ft. for 4-wall 1000 sq. ft. for 3-wall | 20' x 40' – Minimum of 10' to rear of 3-wall court. Minimum 20' overhead clearance. | Long axis north-south. Front wall at north end. | 1 per 20,000 | 15-30 minute travel time | 4-wall usually indoor as part of multi-purpose facility. 3-wall usually outdoor in park or school setting. |
| Ice Hockey | 22,000 sq. ft. including support area. | Rink 85' x 200' (minimum 85' x 185'. Addition 5000 sq. ft. support area). | Long axis north-south if outdoors. | Indoor- 1 per 100,000 Outdoor- Depends on climate | ½ - 1 hour travel time | Climate important consideration affecting number of units. Best as part of multi-purpose facility. |
| Tennis | Minimum of 7,200 sq. ft. single court. (2 acres for complex.) | 36' x 78'. 12' clearance on both sides; 21' clearance on both ends. | Long axis north-south. | 1 court per 2000 | ¼ - ½ mile | Best in batteries of 2-4. Located in neighborhood/ community park or near school site. |
| Volleyball | Minimum of 4,000 sq. ft. | 30' x 60'. Minimum 6' clearance on all sides. | Long axis north-south | 1 court per 5000 | ½ - 1 mile | Same as other court activities (e.g., badminton, basketball, etc.). |
| Baseball 3. Official 4. Little League | 3.0-3.85 A minimum 1.2 A minimum | <ul style="list-style-type: none"> Baselines-90' Pitching distance-60.5' Foul lines-min. 320' Center field-400'+ Baselines-60' Pitching distance-46' Foul lines-200' Center field-200'-250' | Locate home plate so pitcher throwing across sun and batter not facing it. Line from home plate through pitcher-s mound to run east-northeast. | 1 per 5000 Lighted- 1 per 30,000 | ¼ - ½ mile | Part of neighborhood complex. Lighted fields part of community complex. |

NATIONAL PARK AND RECREATION ASSOCIATION
Suggested Facility Development Standards

| Activity/Facility | Recommended Space Requirements | Recommended size and dimensions | Recommended orientation | No. of units per population | Service Radius | Location Notes |
|--|--------------------------------|---|---|---|----------------------------|--|
| Field Hockey | Minimum 1.5A | 180' x 300' with a minimum of 10' clearance on all sides. | Fall season-long axis northwest to southeast. For longer periods, north to south. | 1 per 20,000 | 15-30 minutes travel time | Usually part of baseball, football, or soccer complex in community park or adjacent to high school. |
| Football | Minimum 1.5A | 160' x 360' with a minimum of 6' clearance on all sides. | Same as field hockey. | 1 per 20,000 | 15-30 minutes travel time. | Same as field hockey. |
| Soccer | 1.7 to 2.1 A | 195' x 225' x 330' to 360', with a 10' minimum clearance on all sides. | Same as field hockey. | 1 per 10,000 | 1-2 miles | Number of units depends on popularity. Youth soccer on smaller fields adjacent to schools or neighborhood parks. |
| Golf-driving range | 13.5 A for minimum of 25 tees | 900' x 690' wide. Add 12' width for each additional tee. | Long axis southwest/northeast with golfer driving toward northeast. | 1 per 50,000 | 30 minutes travel time. | Part of golf course complex as a separate unit. May be privately operated. |
| ¼ - Mile Running Track | 4.3 A | Overall width – 276' Length – 600' Track width for 8 to 4 lanes is 32'. | Long axis in sector from north to south to northwest/southeast with finish line at northerly end. | 1 per 20,000 | 15-30 minutes travel time. | Usually part of high school or community park complex in combination with football, soccer, etc. |
| Softball | 1.5 t 2.0 A | Baselines-60' Pitching distance -45' (men), -40' (women). Fast pitch field radius from plate – 225' between foul lines. Slow pitch -275' (men) -250' (women) 120' x 80' | Same as baseball. | 1 per 5,000 (if also used for youth baseball) | ¼ - to ½ - mile | Slight difference in dimensions for 16" slow pitch. May also be used for youth baseball. |
| Multiple Recreation Court (Basketball, Volleyball, Tennis) | 9.840 sq. ft. | | Long axis of courts with primary use north-south | 1 per 10,000 | 1 – 2 miles | In neighborhood or community parks. |

NATIONAL PARK AND RECREATION ASSOCIATION
Suggested Facility Development Standards

| Activity/Facility | Recommended Space Requirements | Recommended size and dimensions | Recommended orientation | No. of units per population | Service Radius | Location Notes |
|---|---|---|---|--|---------------------------|--|
| Trails | N/A | Well defined head. Capacity- Rural trails – 40 hikers/day/mile. Urban trails – 90 hikers/day/mile. | N/A | 1 system per region | N/A | |
| Archery Range | Minimum 0.65 A | 300' length x minimum 10' between targets. Roped clear space on sides of range. Minimum of 30' clear space behind targets. Minimum of 90' x 45' with bunker. | Archer facing north + or + 45 degrees. | 1 per 50,000 | 30 minutes travel time | Part of a regional/ metro park complex. |
| Combination Skeet and Trap Field (8 station) | Minimum 30 A | All walks and structures occur within an area approximately 130' wide by 115' deep. Minimum cleared area is contained within two superimposed segments with 100-yard radii (4 acres). Shot-fall danger zone is contained within two superimposed segments with 300-yard radii (36 acres). | Center line of length runs northeast/ southwest with shooter facing northeast | 1 per 50,000 | 30 minutes travel time | Part of a regional/ metro park complex. |
| Golf | | | | | | |
| 2. Par 3 (18-hole) | <ul style="list-style-type: none"> 50-60 A | <ul style="list-style-type: none"> Average length varies- 600-2700 yards. | Majority of holes on north-south axis. | <ul style="list-style-type: none"> -- | 1/2 to 1 hour travel time | 9-hole course can accommodate 350 people per day. 18-hole course can accommodate 500-550 people per day. Course may be located in community park or school site. |
| 3. 9-hole standard | <ul style="list-style-type: none"> Minimum 50 A | <ul style="list-style-type: none"> Average length 2250 yards. | | <ul style="list-style-type: none"> 1/25,000 | | |
| 4. 18-hole standard | <ul style="list-style-type: none"> Minimum 110 A | <ul style="list-style-type: none"> Average length 6500 yards. | | <ul style="list-style-type: none"> 1/50,000 | | |

NATIONAL PARK AND RECREATION ASSOCIATION
Suggested Facility Development Standards

| Activity/Facility | Recommended Space Requirements | Recommended size and dimensions | Recommended orientation | No. of units per population | Service Radius | Location Notes |
|-------------------|--|--|--|---|------------------------------|---|
| Swimming Pools | Varies on size of pool and amenities. Usually 1 to 2 A site. | Teaching-minimum of 25 yards x 45' even depth of 3 to 4 feet. Competitive-minimum of 25m x 16m. Minimum of 27 square feet of water surface per swimmer. Ratio of 2:1 deck vs. water. | None-although care must be taken in sighting of lifeguard stations in relation to afternoon sun. | 1 per 20,000 (Pools should accommodate 3% to 5% of the total population at a time.) | 15 to 30 minutes travel time | Pools for general community use should be planned for teaching, competitive, and recreational purposes with enough depth to accommodate 1 m and 3m diving boards. Located in community park or school site. |
| Beach Areas | N/A | Beach area should have 50 sq. ft. of land and 50 sq. ft. of water per user. Turnover rate is 3. There should be 3-4 A supporting land per A of beach. | N/A | N/A | ½ to 1 hour travel time | Should have sand bottom with slope a maximum of 5 % (flat preferable). Boating areas completely segregated from swimming areas. In regional/metro parks. |

Adapted from:

Lancaster, R.A., Ed. Recreation, Park and Open Space Standards and Guidelines. Alexandria, VA: National Recreation and Park Association, 1983.
Mertes, J.D. and J.R. Hall. Park, Recreation, Open Space and Greenway Guidelines. Alexandria, VA: National Recreation and Park Association, 1995.

APPENDIX C

**NATIONAL RECREATION AND PARK ASSOCIATION
RECOMMENDED CLASSIFICATION SYSTEM FOR LOCAL AND REGIONAL
RECREATION OPENSOURCE AND TRAILS**

**NATIONAL RECREATION AND PARK ASSOCIATION
RECOMMENDED CLASSIFICATION SYSTEM FOR LOCAL AND REGIONAL RECREATION OPEN SPACE AND TRAILS**

| Classification | General Description | Location Criteria | Size Criteria |
|-------------------------------|--|---|--|
| Mini-Park | Used to address limited, isolated or unique recreational needs. | Less than ¼ mile distance in residential setting. | Between 2500 sq. ft. and one acre in size. |
| Neighborhood Park | Neighborhood park remains the basic unit of the park system and serves as the recreational and social focus of the neighborhood. Focus is on informal active and passive recreation. | ¼ - to ½ -mile distance and uninterrupted by non-residential roads and other physical barriers. | 5 acres is considered minimum size. 5 to 10 acres is optimal. |
| School-Park | Depending on circumstances, combining parks with school sites can fulfill the space requirements for other classes of parks, such as neighborhood, community, sports complex and special use. | Determine by location of school district property. | Variable-depends on function. |
| Community Park | Serves broader purpose than neighborhood park. Focus is on meeting community-based recreation needs, as well as preserving unique landscapes and open spaces. | Determined by the quality and suitability of the site. Usually serves two or more neighborhoods and ½ to 3 mile distance. | As needed to accommodate desired uses. Usually between 30 and 50 acres. |
| Large Urban Park | Large urban parks serve a broader purpose than community parks and are used when community and neighborhood parks are not adequate to serve the needs of the community. Focus is on meeting community-based recreational needs, as well as preserving unique landscapes and open spaces. | Determined by the quality and suitability of the site. Usually serves the entire community. | As needed to accommodate desired uses. Usually a minimum of 50 acres, with 75 or more acres being optimal. |
| Natural Resource Areas | Lands set aside for preservation of significant natural resources, remnant landscapes, open space, and visual aesthetics/buffering. | Resource availability and opportunity. | Variable. |
| Greenways | Effectively tie park system components together to form a continuous park environment. | Resource availability and opportunity. | Variable. |
| Sports Complex | Consolidates heavily programmed athletic fields and associated facilities to larger and fewer sites strategically located throughout the community. | Strategically located community-wide facilities. | Determined by projected demand. Usually a minimum of 25 acres, with 40 to 80 acres being optimal. |
| Special Use | Covers a broad range of parks and recreation facilities oriented toward single- purpose use. | Variable-dependent on specific use. | Variable. |

**NATIONAL RECREATION AND PARK ASSOCIATION
RECOMMENDED CLASSIFICATION SYSTEM FOR LOCAL AND REGIONAL RECREATION OPEN SPACE AND TRAILS**

| Classification | General Description | Location Criteria | Size Criteria |
|---|---|--|---------------|
| Private Park/Recreation Facility | Parks and recreation facilities that are privately owned yet contribute to the public park and recreation system. | Variable-dependent on specific use. | Variable. |
| Park Trail | Multipurpose trails located within greenways, parks and natural resource areas. Focus is on recreational value and harmony with natural environment. | Type I: Separate/single-purpose hard-surfaced trails for pedestrians or bicyclists/ in-line skaters. Type II: Multipurpose hard-surfaced trails for pedestrians and bicyclists/ in-line skaters. Type III: Nature trails for pedestrians. May be hard- or soft- surfaced. | |
| Connector Trails | Multipurpose trails that emphasize safe travel for pedestrians to and from parks and around the community. Focus is on recreational value and harmony with natural environment. | Type I: Separate/single-purpose hard-surfaced trails for pedestrians or bicyclists/in-line skaters <u>located in independent r.o.w. (e.g., old railroad r.o.w.).</u> Type II: Separate/single-purpose hard-surfaced trails for pedestrians or bicyclists/in-line skaters. <u>Typically located within road r.o.w.</u> | |
| On-Street Bikeways | Paved segments of roadways that serve as a means to safely separate bicyclists from vehicular traffic. | Bike Route: Designated portions of the roadway for the preferential or exclusive use of bicyclists. Bike Lane: Shared portions of the roadway that provide separation between motor vehicles and bicyclists, such as paved shoulders. | |
| All-Terrain Bike Trail | Off-road trail for all-terrain (mountain) bikes. | Single-purpose loop trails usually located in larger parks and natural resource areas. | |
| Cross-Country Ski Trail | Trails developed for traditional and skate-style cross-country skiing. | Loop trails usually located in larger parks and natural resource areas. | |
| Equestrian Trail | Trails developed for horseback riding. | Loop trails usually located in larger parks and natural resource areas. Sometimes developed as multipurpose with hiking and all-terrain biking where conflicts can be controlled. | |

Adapted from:

Lancaster, R.A., Ed. Recreation, Park and Open Space Standards and Guidelines. Alexandria, VA: National Recreation and Park Association, 1983.
Mertes, J.D. and J.R. Hall. Park, Recreation, Open Space and Greenway Guidelines. Alexandria, VA: National Recreation and Park Association, 1995.

APPENDIX D

**NATIONAL RECREATION AND PARK ASSOCIATION
STANDARDS FOR PARK ACREAGE**

| NATIONAL RECREATION AND PARK ASSOCIATION Standards for Park Acreage | | | | | |
|--|--|---|----------------|------------------------|--|
| Component | Use | Service Area | Desirable Size | Acres/1,000 Population | Desirable Size Characteristics |
| Mini-park | Specialized facilities that serve a concentrated or limited population or specific group, such as tots or senior citizens | Less than ¼ miles radius | 1 acre or less | 0.25 to 0.5 A | With neighborhoods in close proximity to apartment complexes, townhouse development or housing for the elderly. |
| Neighborhood Park or Playground | Area for intense recreational activities, such as field games, crafts, playground apparatus areas, skating, picnicking, wading pools, etc. | ¼ to ½ mile radius to serve a population up to 5,000 (a neighborhood) | 15 + acres | 1.0 to 2.0 A | Suited for intense development. Easily accessible to neighborhood population (geographically centered for safe walking and biking access). May be developed as a school park facility. |
| Community Park | Area of diverse environmental quality. May include areas suited for intense recreation facilities, such as athletic complexes, large swimming pools. May be an area of natural quality for outdoor recreation, such as walking, viewing, sitting, picnicking. May be any combination of the above, depending upon site | 1 to 2 mile radius (several neighborhoods) | 25 + acres | 5.0 to 8.0 A | May include natural features, such as water bodies and areas suited for intense development. Easily accessible to neighborhood served. |

| | | | | | |
|---|------------------------------------|--|--|--|--|
| | suitability and community need. | | | | |
| Total Close-to-Home Space = 6.25 – 10.5 A/1,000 | | | | | |

APPENDIX E

Barrier Free Accessibility Requirements for Parks

BARRIER FREE ACCESSIBILITY REQUIREMENTS FOR PARKS

Recreational areas, facilities, and programs play an important role in the life of the community; therefore it is essential that people with disabilities have an equal opportunity to enjoy these areas and any programs provided. Federal and state laws prohibit discrimination on the basis of disability, and these laws apply to parks and other recreation lands and programs controlled and operated by local units of government. The DNR has a strong commitment to barrier free recreational opportunities in our Department-managed programs and facilities. This commitment extends to those communities that receive recreation grants.

Under the state Utilization of Public Facilities by the Physically Limited Act (1966 PA 1, as amended) all public facilities, including improved areas used for recreation, must meet the barrier free design requirements contained in the state construction code. Under this act, the administration and enforcement related to barrier free design requirements are vested in the local or state government agency responsible for issuing a building permit. If the project does not require a building permit, administration and enforcement of barrier free design requirements are vested in the Department of Labor and Economic Growth.

Any request for an exception to the barrier free design requirements of the state construction code must be submitted to the Barrier Free Design Board, within the Department of Labor and Economic Growth (517-241-9300). The Barrier Free Design Board has the responsibility to receive, review, and process requests for exceptions to barrier free design specifications; require appropriate equivalent alternatives when exceptions are granted; and receive, process, and make recommendations for barrier free design rules.

Because the state construction code does not apply to many recreation facilities, it is essential that you also be aware of and understand the existing federal guidelines covering these types of facilities. In July 2004, the federal Architectural and Transportation Barriers Compliance Board (known as the Access Board) issued updated guidelines, entitled the Americans with Disabilities Act Accessibility Guidelines (ADAAG), for new or altered facilities covered by the Americans with Disabilities Act of 1990 (Public Law 101-336) or the Architectural Barriers Act of 1968 (Public Law 90-480). These guidelines should eventually be adopted as enforceable standards. Until that occurs, the existing ADAAG standards must be followed when the two conflict.

Included in the updated ADAAG are technical provisions for a number of types of recreation facilities, including play areas, amusement rides, boating facilities, fishing piers and platforms, golf courses, miniature golf courses, shooting facilities, swimming and wading pools, and spas. Technical provisions for these recreation facilities do not exist in the current AADAG. The Access Board has also proposed guidelines for sports facilities, trails, beaches, and picnic and camping areas. While none of these guidelines has yet been adopted as federal standards, they represent the best information available on developing barrier free recreation facilities and may be upheld in a court of law. Therefore, they should be referred to when designing new or renovated recreation facilities.

APPENDIX F

Public Participation

- **Survey Information**
 - Survey instrument (blank form)
 - Survey tabulation and transcription of comments
 - Survey analysis
- **Focus Group Results**
 - RAMBA
 - LBADC
- **Newspaper Affidavit and Ad copy**
- **Miscellaneous Emails with Public Input on Community Recreation Plan**
- **Meeting Minutes**
 - Parks and Recreation Commission, October 17, 2017
 - Parks and Recreation Commission, December 19, 2017
 - Parks and Recreation Commission, January 16, 2018
 - Planning Commission, January 7, 2018
 - City Council, January 10, 2018
 - City Council, February 13, 2018

City of Ishpeming
Parks and Recreation Survey

Purpose: This survey is your opportunity to influence Park and Recreation decision-making in the City of Ishpeming. The survey information will become part of the 2018-2022 Community Recreation Plan.

Instructions: Please complete the following survey in ink and return it to City Hall before *February 9, 2018*.

Background Information: The City of Ishpeming is updating our Community Recreation Plan. Copies of the current plan (2014-2018) and a copy of a draft plan for 2018-2022 are located at the following places: Carnegie Public Library, City Hall, the Senior Center in Ishpeming, and on line at www.ishpemingcity.org

This survey is completely anonymous. If you have questions about the survey or wish to contact the City regarding this survey, please feel free to do so, but we will not track the source of any input. If you need additional space for your comments, please use an additional sheet of paper and turn it in with this survey.

1. Accessibility:

Do the City's Park facilities have adequate accessibility for you and your family's needs? Yes ___ No ___

If no, please tell us where or what access improvements are needed.

Regarding you or your family's accessibility needs, please check all that apply:

- ☐ Full Wheelchair Access
- ☐ Disability Designated Parking
- ☐ Wheelchair ramps
- ☐ Other services are needed

Please describe other services needed: _____

2. Recreational Facilities:

Please check all the boxes for recreational facilities you or your family use:

- | | |
|---|---|
| <input type="checkbox"/> Trails/ Wilderness Areas | <input type="checkbox"/> Basketball courts |
| <input type="checkbox"/> Al Quaal Lodge | <input type="checkbox"/> Volleyball courts |
| <input type="checkbox"/> Teal Lake Lodge | <input type="checkbox"/> Horseshoe courts |
| <input type="checkbox"/> Pavilions/Gazeboes | <input type="checkbox"/> Tennis courts |
| <input type="checkbox"/> Baseball Fields | <input type="checkbox"/> Tube slide |
| <input type="checkbox"/> Playlots/Playgrounds | <input type="checkbox"/> Football field/Track |
| <input type="checkbox"/> Public rest rooms | <input type="checkbox"/> Swimming Pool |
| <input type="checkbox"/> Trailheads | <input type="checkbox"/> Lakes/beaches |
| <input type="checkbox"/> Boat launch | <input type="checkbox"/> Cross Country Skiing |

Other: _____

3. New or Improved Facilities:

Community leaders are talking about improving recreational facilities. Here is a list of possible improvements: a downtown multi-purpose park (with a skatepark, a lighted ice rink, and public restrooms); improved tennis courts; expanded trail system; a new toboggan run; tow-rope system for downhill skiing; new disc golf course; a new T-ball facility; soccer field(s); modern playgrounds. Because these projects are costly and the City has limited funds, these projects would probably **not** be funded with tax dollars. Instead, new projects would be mostly funded with grants and private donations. In your opinion, what new or improved recreational facilities are needed in Ishpeming?

City of Ishpeming
Parks and Recreation Survey (continued)

4. Maintenance/Care of Facilities:

The City has many recreational facilities, but a very limited budget. The following questions are about the care and maintenance of City's facilities:

Does the City adequately maintain the existing facilities? Yes _____ No _____

Should a larger percent of the City budget go toward recreational facilities? Yes _____ No _____

Would you be willing to pay more taxes for better facilities? Yes _____ No _____

Should the City close some facilities to better maintain the remaining facilities? Yes _____ No _____

If yes, what facilities would you suggest the City close? _____

5. Smoking: Should the City allow smoking in our Parks? Yes _____ No _____

6. Overall Assessment of City of Ishpeming Parks and Recreations:

(Using a range of 1 to 5 with 1 being excellent and 5 being poor)

Rate the City's Parks and Recreational Facilities: _____

Thank you for completing this survey.
Before February 9, 2018, please return it to:
City Hall, 100 E. Division Street, Ishpeming, MI 49849

City Hall
Attention: Mark Slown
100 E. Division Street
Ishpeming, MI 49849

City of Ishpeming
Parks and Recreation Survey
Tabulation of Results and Transcript of Public Comments)

Purpose: This survey is your opportunity to influence Park and Recreation decision-making in the City of Ishpeming. The survey information will become part of the 2018-2022 Community Recreation Plan.

Instructions: Please complete the following survey in ink and return it to City Hall before *February 9, 2018*.

Background Information: The City of Ishpeming is updating our Community Recreation Plan. Copies of the current plan (2014-2018) and a copy of a draft plan for 2018-2022 are located at the following places: Carnegie Public Library, City Hall, the Senior Center in Ishpeming, and on line at www.ishpemingcity.org

This survey is completely anonymous. If you have questions about the survey or wish to contact the City regarding this survey, please feel free to do so, but we will not track the source of any input. If you need additional space for your comments, please use an additional sheet of paper and turn it in with this survey.

1. Accessibility:

Do the City's Park facilities have adequate accessibility for you and your family's needs? Yes: 153 No: 12

If no, please tell us where or what access improvements are needed: These inputs are included in the list of comments at end of tabulations

Regarding you or your family's accessibility needs, please check all that apply:

| | |
|-------------------------------|----|
| Full Wheelchair Access | 17 |
| Disability Designated Parking | 31 |
| Wheelchair ramps | 15 |
| Other services are needed | |

Please describe other services needed: These inputs are included in the list of comments at end of tabulations

2. Recreational Facilities:

The number shown below is the total tally, ranked in descending order for personal/family use:

| | |
|--------------------------|-----|
| Public rest rooms | 123 |
| Trails/ Wilderness Areas | 118 |
| Lakes/beaches | 94 |
| Al Quaal Lodge | 86 |
| Pavilions/Gazeboes | 82 |
| Playlots/Playgrounds | 79 |
| Tube slide | 69 |
| Teal Lake Lodge | 63 |
| Trailheads | 60 |
| Baseball Fields | 54 |
| Football field/Track | 52 |
| Cross Country Skiing | 51 |
| Boat launch | 39 |
| Tennis courts | 34 |
| Basketball courts | 26 |
| Horseshoe courts | 16 |
| Swimming Pool | 16 |
| Volleyball courts | 10 |

Other: each of the following was noted once: snow shoe trail, rowing, and disc golf

City of Ishpeming
Results of Parks and Recreation Survey (continued)

3. New or Improved Facilities:

Community leaders are talking about improving recreational facilities. Here is a list of possible improvements: a downtown multi-purpose park (with a skate-park, a lighted ice rink, and public restrooms); improved tennis courts; expanded trail system; a new toboggan run; tow-rope system for downhill skiing; new disc golf course; a new T-ball facility; soccer field(s); modern playgrounds. Because these projects are costly and the City has limited funds, these projects would probably **not** be funded with tax dollars. Instead, new projects would be mostly funded with grants and private donations. In your opinion, what new or improved recreational facilities are needed in Ishpeming?

| | |
|---------------------|----|
| Ice Rink: | 50 |
| Downtown Park: | 43 |
| Tennis Courts: | 43 |
| Skate Park: | 37 |
| Modern Playground: | 26 |
| New Toboggan Run: | 25 |
| Tow Rope for Ski: | 19 |
| Expand Trails: | 16 |
| Disc Golf: | 13 |
| Soccer field: | 11 |
| Dog Park: | 9 |
| No More Facilities: | 6 |
| More Benches: | 2 |
| Sled Hill: | 1 |
| New Beach area: | 1 |
| New Pavilion: | 1 |
| Trailheads: | 1 |
| Basketball Court | 1 |
| More Staff: | 1 |
| Band Shell: | 1 |
| Winter Trash cans: | 1 |
| Signage: | 1 |
| Free Tours: | 1 |

4. Maintenance/Care of Facilities:

The City has many recreational facilities, but a very limited budget. The following questions are about the care and maintenance of City's facilities:

| | | | | |
|--|-----|-----|----|-----|
| Does the City adequately maintain the existing facilities? | Yes | 144 | No | 28 |
| Should a larger percent of the City budget go toward recreational facilities? | Yes | 50 | No | 109 |
| Would you be willing to pay more taxes for better facilities? | Yes | 52 | No | 113 |
| Should the City close some facilities to better maintain the remaining facilities? | Yes | 29 | No | 122 |

If yes, what facilities would you suggest the City close? Unused play lots, ski trails/grooming, non-motorized trail behind ALS shop (needs maintenance/blacktop), Pioneer Bluff Park (on Second St.), Park near Cedar and Division (never care...), kids playground (outdated), Disc Golf, update or close old/outdated playgrounds, eliminate or repurpose ballfields (at Playgrounds), unused playlots: These inputs are included in the list of comments at end of tabulation.

| | | | | | | |
|----|--|---------|---------|---------|---------|--------|
| 5. | Smoking: Should the City allow smoking in our Parks? | Yes | 52 | No | 118 | |
| 6. | Overall Assessment of City of Ishpeming Parks and Recreations: (Scale of 1 to 5; with 1 being excellent and 5 being poor) | 1 24 | 2 43 | 3 55 | 4 26 | 5 9 |

List of Recreation survey Comments Received:

"We are elderly with a limited income. About the only park we use is the Al Quaal—the trails and roadway for walking, and the swings/slides for our grandchildren. We see the tennis and basketball courts there do receive quite a bit of use in the summer."

"Please remember this is the UP. It is not the City's responsibility to discourage smoking in open air spaces. Serve all the people. There is plenty of fresh air for non-smokers."

"The downtown park is the best idea of the list."

"We don't need a skate park or disc golf course. Fix the sidewalks and plow them so we could walk on them in the winter."

"Parks are kept up beautifully. We need more utilization to keep people local and skate-park in summer use might help curb some of the boredom that kids seem to have locally."

"Skate Park and outdoor ice rink would be welcome additions. All our children must travel outside the City to currently do both of these activities. Not feasible for either the adults or kids."

"Look into volunteers (to help maintain the parks)"

"Teal Lake Lodge—inadequate access, no kitchen facilities, out of the way..."

"Close Play lots. Never see kids there."

"I would love to see a "dog park" in Ishpeming and would be willing to pay a fee for using it."

"There are a few smaller parks in disuse that teens flock to & damage."

"Too many dogs pooping at Lake Bancroft & Al Quaal—disgusting."

"I would like to see the tow rope restored for downhill skiing. Al Quaal is where I learned to ski when I was young. I went on to race in high school & college."

"Fix up Jasper Knob (Gemstone), Black River Park, and things people forgot."

"Reduce activities for kids. They are supported already by fed, state, house & income & property taxes."

"Pave roads at least 2nd and 3rd streets."

"How wonderful it would be if our city would establish a dog park! Many dogs will thank you! It is so nice that mutt mitts have been put up along the Oak Street side of Lake Bancroft, thank you for that."

"Public Rest Rooms at Al Quaal, Teal Lake and Playgrounds."

"Anything that continues to keep the kids busy and off drugs: skate-park, ice rink, etc...."

"We badly need new tennis courts."

"Teal Lake Access—it is not really a boat launch. Would be nice if it was an actual boat launch."

List of Recreation Survey Comments Received (continued):

"If building by Lake Bancroft, make a small kitchen area. It is really needed in this town. You would make money from rentals. Teal Lake would really benefit with kitchen."

"Needs signs to tell you where to next. Or, you could find on your phone."

"Something with low maintenance, possible a better beach area."

"Allow non-motorized trail around Lake Angeline."

"The fee for league use of the horseshoe area is prohibitively expensive."

"No new facilities are needed."

"Improve Cedar Beach."

"Allow rustic camping at Al Quaal and Cedar Lake."

"No interpretive trails signage/info."

"A downtown multi-purpose park could bring people downtown which could improve business opportunities and, thus, improve the tax base."

"Public parks should never be closed to the public, day or night."

"I remember the old toboggan run & tow-rope system from when I was young. What fun!"

"More handicap parking at events such as 4th of July, and other events at Al Quaal, etc."

"Need more benches on trails and Al Quaal areas. Porta potties would be great here & there along the trails, or public restrooms."

"Basketball courts; lost full court on Division St. across from old hospital, lost court on Pearl St. with new H.S. cafeteria."

"Need a downtown multi-purpose park."

"Playgrounds outdated Al Quaal outdated equipment."

"Need public restrooms open all the time by the football field/track/playground."

"Public restrooms at Al Quaal need to be open at all times."

"Expand the trail system."

"Need non-motorized walking paths and dog park."

"Could improve lighting with replacement of burned out street lights."

"Is all this stuff why you raised my property taxes? I do not use any of this and didn't vote on it either!!!"

"How about fixing the roads?"

"Please more stuff for these kids (ages 0-16) to do; to have fun with the whole family."

"Al Quaal could be updated. Maybe a mini carnival park with a pool or maybe a little concession stand."

"Improve our tennis courts. They are pathetic! They were pathetic 25 years ago! Needs TLC desperately."

"We need a park near Cleveland Avenue, the central school no longer has a playground. Solar powered lighting for evenings. Safety!"

"The park near Cedar and Division St. has a baseball diamond that is never cared for. It needs bases and updated equipment. Lots of space but the city doesn't care!"

"Our community kids need something to do!"

List of Recreation Survey Comments Received (continued):

Facilities are "hard for handicapped, wheel chair dependent people" to use.

"Need unisex bathrooms."

"Might not be recreational but sidewalks are terrible for wheel chair which makes it impossible for anyone in a wheel chair to get anywhere."

"I've watched on multiple occasions the grounds keeper kick people out of the basketball court and football field and hang up a homemade no trespass sign."

Need "stuff children can do."

Build "band shell at old Edward Jones location."

In the parks, allow "smoking in designated areas."

"We should work to improve and maintain the facilities we have."

"Care for what is there!"

Need "more bathrooms."

"With the recent water increases- no more tax increase."

Need "Trail improvements-mowing occasionally in summer—for walking, running, bicycle."

"Recreation is important but so are streets, police."

"Please fix our roads first."

"Update facilities at the football field."

"More staff for ongoing regular jobs."

"Much bigger problems! Make no improvements unless you are going to increase law enforcement, so people feel safe in this drug infested town! Get serious, try the water quality & iron ore dirt!"

A tax increase "so long as it resulted in an actual increase in recreation funds and not a General Fund offset."

"A warming room at the ice rink downtown for 'littes' (kids?)!"

"Tennis courts need work..."

"Maintain & upgrade all existing facilities with grants."

"Tell school -leave "all" gates open—violating"

"Maintain and improve existing--expand manpower."

"Improve tennis courts, trail systems, modern playground."

"Pavilion at Al Quaal should have some sort of wind protection added."

"Maintain and improve existing facilities."

Add a "Southern connection to IOHT."

"Improve all streets first."

"Feel facilities are not used a lot currently. Modern playground might draw more to Al Quaal. Not in favor of a downtown park. Feel that the draw is the Al Quaal area & could be improved & made a destination."

"More information where how long a walk or destination. Mow more. Brush out back. No dogs on courts...need bags for dog clean up. Need recreation for older people, like maybe a fruit market or bake sale, like Marquette does on Saturday or Negaunee does on

List of Recreation Survey Comments Received (continued):

Wednesday in the park. P.S. maybe get the neighborhood watch helping services on mowing or painting, etc. All you could do is ask at a meeting. Some people may be willing to help in their own area. Shoveling fire hydrants."

"Tennis Courts the number 1 priority. I rated the City Recreation low mainly because of the tennis courts and no public access to use the track."

"Improve more important things than recreational. Leave Lake Bancroft alone. It is very nice the way it is—touch up the Gazebo paint."

Regarding City Park Staff: "They are all doing a good job."

"Quit using funds for Lake Bancroft—waste of money over the last 8 years. The lake has not met the quality standards for public use. Wasted investment still unusable. Lake Bancroft has been a money pit with no valuable resolution."

"Would like to see a list of city facilities to close."

"Initiate as many activities in the downtown area; not across town. Having to cross 41 to a large out-of-the-way area is not safe for children and too far for downtown dwellers. Possibly more info needed here (to consider closing facilities)."

"No wildlife killing: Police Dept. Change walking and ATV trails as both the same trails with speed limits. Let the walking trail pay their share. No outlet to go north for ATV. Handicap ? & walk together."

Regarding the question, Should a larger percentage of budget go for recreational facilities, the respondent comments: "maybe if you quit giving 80-85% of their salary (it's unsustainable) in pensions to early retiring workers there would be more \$ in your budget. In this small town nobody should make that much in retirement. Huge water bills and taxes that go up yearly (while our social security or paychecks don't) are pushing responsible homeowners out of city."

"I am 82 yrs old. I have been an Ishpeming resident all of my life. I used to be proud of our city, loved our city & promoted our city. In my opinion the city of Ishpeming is the worst managed city in the U.P.. Especially for a city our size. We applaud Mr. Skauge and Mr. Lehmann in their efforts to push the important issues instead of creating ridiculous issues such as the smoking ban, chew ban, e-cigarette ban. This will only drive more people out of our city instead of promoting new comers. Our taxes are one of the highest in the U.P. (Has been researched). And what do we receive for them? Horrible roads. Outrageous water bills. I live alone and my water consumption/use is not even close to the minimum. Yet I am required to pay the minimum which is \$79.95, includes 1 bag of garbage pickup per week and our wonderful (Ha, HA) maintenance of our great (Ha, Ha) sewer system. I have talked to many residents who feel the same way I do. Unfortunately, most of you care only what you can spend money on to ban. Always looking for more money (for what may I ask). I have picked up on my walks more fast-food garbage/liquor bottles, etc. than I care to think about. A lot more of that than anything to do with tobacco. Are you going to ban those items also? Why should people move to Ishpeming? Oh yes, I forgot, to have more rules, regulations and to have to pay for them. I am too old to move now, but if I was younger, I would have packed up a long time ago. A very sad and disgusted citizen."

"Ideas for Parks and Recreation: Update play grounds with modern equipment. Build a play area at Al Quaal, like Marquette lower harbor (volunteers to do this). Improve the beach (Ishpeming side of Teal Lake), excavate the area and bring in sand, set up a proper boat launch. Improve (new) picnic facilities. A skate park and ice rink would be a great idea. Build a roof over the band stage at Al Quaal. Set up a kitchen at Al Quaal Lodge, many people have thought this. Get the public to adopt parks in their area, this would help with clean up. Also: video surveillance should be set up at all our parks to help control crime, vandals, etc. And strictly enforce pet restrictions, specifically dogs. Make high fines for not cleaning up after your dog. Al Quaal is disgusting in the spring from people walking dogs."

"The city pays for too many things that area township residents enjoy for free or little cost that doesn't cover the city's cost."

"If we can't maintain a park or a part of the park properly, example little kids playground by the football field, it should be removed."

"Best Park is Birchview & no restroom available. Could a nice playground be put at Al Quaal since bathrooms already there?"

"New good sidewalks. Modern Playground with restrooms open all summer (May – Sept 31st)"

"No outdated playgrounds. Road/snow removal most important."

"Practical size ice rink, well located drinking fountains/refill stations."

"A new toboggan run and a downtown multi-purpose park"

"Need improve tennis courts and some soccer fields."

List of Recreation Survey Comments Received (continued):

“Skate park so they aren’t on the roads, new tennis courts, ice rink would be fun, down-hill skiing that’s cheaper than Marquette.”

“ (We need) a modern playground and expanded trails.”

Discussion and Analysis of the Results of the Park and Recreation Survey

General Comments: About 190 responses were received from approximately 2,300 survey instruments mailed to residential addresses in the City. That is a response rate of over 8.2 percent. Based on published professional survey literature, a response rate of 3 to 4 percent is generally considered by to be sufficient to approximate a group's responses to survey instruments. Therefore, we may have high confidence that these survey results fairly represent the community's responses to the questions in the survey.

Section 1: Regarding accessibility, a dozen responses indicated that accessibility was a problem. These are probably persons or families with specific issues. 153 responses indicated no accessibility issues. Thirty one responses indicated more disability designated parking spaces are needed. Some of these noted that the additional ADA parking is needed in the Al Quaal Recreation Area.

Section 2: Regarding use of recreational facilities, it is no surprise that public restrooms was indicated as the most used. This high use is consistent across most communities. The second ranked item—Trails/Wilderness Areas—is not surprising. Our trails and wilderness areas are one of our community's greatest attractions/features. The same could be said of lakes and beaches. Although, it is interesting to note that a few people marked this area with a question mark (?), indicating they were puzzled. It may be that some of our newer residents are unaware of the City's two beaches (Teal Lake and Cedar Lake). These locations are not particularly visible and not marked. This may be an area for further investigation. The numbers for the lodges, pavilions, and tube slide are not particularly surprising. However, I was surprised by the large number of responses indicating use of the playlots/playgrounds: 79. That is almost half of the surveys received. If extrapolated to the entire community, this number suggests that over half of our citizens (or the children in their family) use these facilities. Some people have suggested that we should close some of these facilities; however, with this high level of use, closing these facilities should be very carefully considered, as it may not serve our community well to do so. The rest of the use data tracks fairly well with generally accepted sport popularity data.

Section 3: Regarding new or improved facilities, the largest number of responses were for four ideas: an Ice rink, a downtown park, tennis court improvements, and a skate park. The next largest number of responses clustered around: a modern playground, a new toboggan run, a skiing tow rope system, expanded trails, disc golf, and soccer. Nine responses requested a dog park. Six responses indicated that the City should not consider any new facilities. Often this response was accompanied by a comment about maintenance of existing facilities or the condition of street.

Section 4: Regarding care and maintenance of recreational facilities, the responses were very favorable concerning adequate maintenance of existing facilities with 144 "Yes" and only 28 "No." By two-to-one, responses did not favor either giving recreation a larger portion of the budget or increasing taxes to pay for recreational facilities. Four-to-one were against closing any facilities.

Section 5: Regarding smoking in the parks, better than two-to-one indicated the City should not allow smoking. Please note that there were a few strongly worded comments in the opposite direction.

Section 6: The overall assessment of City Parks and Recreation was favorable. On a scale of one to five, with one being excellent and five being poor, 122 ranked the City 3 or higher, while only 35 ranked the City 4 or 5. Please note that 33 of the 190 surveys did not provide a score. That is about 18 percent of the submitted responses. Of the 157 responses marking an overall assessment, the average of the scores was 2.7.

The results for this survey are generally favorable for the City and support the draft 2018-2022 Community Recreation Plan as presented.

Mark Slown

2018 Community Recreation Plan

Results from RAMBA Focus Group

- 1.) What are the strengths of Community Recreation in Ishpeming?**
 - a. IOHT**
 - b. Al Quaal**
 - c. Access to public land**
 - d. RAMBA Trails/organization/group passion**
 - e. Amazing historic area/interesting places to ride**
 - f. Unique community character is attractive to people**
- 2.) What are the weaknesses of Community Recreation in Ishpeming?**
 - a. Signage/wayfinding/directions lacking**
 - b. Geographic challenge/need to connect**
 - c. Not enough trailheads**
 - d. Lack of successful marketing/promotion**
- 3.) What Goals does RAMBA have for recreation in Ishpeming?**
 - a. Cross promotion with NTN; better maps and kiosks**
 - b. Complete skill building complex**
 - c. Continue trail development**
 - d. Complete a trailhead at Al Quaal**
- 4.) What should the City of Ishpeming do to further RAMBA Goals?**
 - a. Signage/wayfinding project**
 - b. Continue positive relations**
 - c. Be prepared to work on electric bike issues**
- 5.) What should the City of Ishpeming select as the top three priorities for recreational Improvement in the Five Year Plan?**
 - A. Continue building new and improved trail links**
 - B. Trailhead at Al Quaal**
 - C. More bike lanes on city streets**

Any other Comments you have: See individual sheets attached.

Participant: See list attached.

RECREATION PLAN UPDATE 2018-2022

FOCUS GROUP – Range Area Mountain Bike Association (RAMBA) JANUARY 29, 2018

Attendees:

| | | |
|--------------------------|--|--------------|
| Mark Slown, City Manager | | |
| Mike Pryor, RAMBA | Pryors906@gmail.com | 906-250-1474 |
| Cam Remiem, RAMBA | swixboy@aol.com | 906-458-8014 |
| Matthew Bloch, RAMBA | blochwm@gmail.com | 906-362-2417 |
| Danny Hill, RAMBA | imfinn@aol.com | 906-236-2876 |
| Jeff Brittain, RAMBA | brittainjcharles@gmail.com | 906-458-9288 |
| Tyler Gauthier, RAMBA | tygauthi@gmail.com | 906-362-7732 |

2018 Community Recreation Plan

Focus Group—RAMBA

1.) What are the strengths of Community Recreation in Ishpeming?

Surrounded by varied Terrain
Open land
Historic Mine area
Unique Small town feel

Not encumbered with a bigger metro area,
• Road Noise
Longstanding, group of trail builders & riders.
IOWT access

Public Land access
AI Quaal

2.) What are the weaknesses of Community Recreation in Ishpeming?

1. Signage/infrastructure. Way finding Signage.
2. Marketing
3. Spend \$ to Market Ishpeming in MAT Bike Shops.

3.) What Goals does RAMBA have for recreation in Ishpeming?

Continue to develop world class, tight, technical, hand built MTB trails and promote the area in the region and the world.
• Tourist oriented Direction sign
• Skills park at Howard Oil.
• Trail Development at AI Quaal

4.) What should the City of Ishpeming do to further RAMBA Goals?

1. Politely set some limits on horseback riding on trails built by volunteers that are MTB specific.
2. Protect the trails from development urban sprawl.
3. Help us gain access to secret underground mine areas for trail developments

5.) What should the City of Ishpeming select as the top three priorities for recreational Improvement in the Five Year Plan?

A.

B.

C.

Any other Comments you have:

Help us identify every historic mine site the RAMBA trail crosses.

Name (optional): Jeff Brittain

2018 Community Recreation Plan

75E

Focus Group—RAMBA

1.) What are the strengths of Community Recreation in Ishpeming?

- ~~RAMBA~~ access - RAMBA

Land

- JOHT

2.) What are the weaknesses of Community Recreation in Ishpeming?

- ~~large~~ area But is split up.

- marketing

3.) What Goals does RAMBA have for recreation in Ishpeming?

- ~~AL~~ Qual

- T.O.D.S

- HOB Development

4.) What should the City of Ishpeming do to further RAMBA Goals?

E Bike Policy

5.) What should the City of Ishpeming select as the top three priorities for recreational Improvement in the Five Year Plan?

A. HOB Improvements

B. ~~AL~~ Qual Trailhead

C. Signs and Directions

Any other Comments you have:

Name (optional): _____

2018 Community Recreation Plan

Focus Group—RAMBA

1.) What are the strengths of Community Recreation in Ishpeming?

public Land access for recreation
Heritage trail , RAMBA trails

2.) What are the weaknesses of Community Recreation in Ishpeming?

Need a better trailhead
Parking for recreation areas

3.) What Goals does RAMBA have for recreation in Ishpeming?

Tourist Oriented Direction Sign TODS
Al Quaal trailhead

4.) What should the City of Ishpeming do to further RAMBA Goals?

support Trailhead Development and Parking at Howard Oil
and Al Quaal

5.) What should the City of Ishpeming select as the top three priorities for recreational Improvement in the Five Year Plan?

- A. Develop Al Quaal trails
- B. Further Trailhead development at Howard Oil Building
- C. Better signage for Directions to trails on roads and Highways

Any other Comments you have:

Thanks to the city of Ishpeming for supporting RAMBA

Name (optional): Herbert C Remien

2018 Community Recreation Plan

Focus Group—RAMBA

1.) What are the strengths of Community Recreation in Ishpeming?

LOFT, AQ, LAND ACCESS, RAMBA TRAILS
HISTORIC AREA w/ MINING, UNIQUE VIBE/ CHARACTER
PASSIONATE GROUP OF MTN. BIKERS

2.) What are the weaknesses of Community Recreation in Ishpeming?

COMPETITIVE RIDING AREAS - ~~WATER~~ INFRASTRUCTURE
WAY FINDING SIGNS, TRAIL HEAD(S), BILLAGES/
BUDGETS. MULTIPLE VENUES/TRAILHEADS MARKETING

3.) What Goals does RAMBA have for recreation in Ishpeming?

JOB FURTHER DEVELOPMENT: AQ DEVELOPMENT
SKILLS PARK SIGNS, MAPS, KIOSKS, AWARENESS OF AREAS TO RIDE

4.) What should the City of Ishpeming do to further RAMBA Goals?

SIGNS ON ~~4/1/28~~ 4/1/28? MALTON RD. (LEADING TO TRAIL HEAD)
WAYFINDING

5.) What should the City of Ishpeming select as the top three priorities for recreational Improvement in the Five Year Plan?

- A. ASSIST WITH MARKETING RAMBA TRAILS • MTN COUNTY KIOSKS
- B. WAYFINDING • SIGNS, MAPS
- C. AQ TRAIL HEAD

Any other Comments you have:

EXTRORDINARILY GRATEFUL FOR THE CITY OF ISH
ALLOWING RAMBA TO CONTINUE TO GROW. & FOR
ENVIRONMENT OF COOPERATION!

Name (optional): MIKE PRYOR

RAMBA

2018 Community Recreation Plan

Focus Group—RAMBA

1.) What are the strengths of Community Recreation in Ishpeming?

IOHT LAND ACCESS HISTORIC AREAS
ALQUAAL RAMBA SMALL TOWN FEEL

2.) What are the weaknesses of Community Recreation in Ishpeming?

INFRASTRUCTURE MULTIPLE TRAILHEADS
GEOGRAPHY MARKETING

3.) What Goals does RAMBA have for recreation in Ishpeming?

CROSS PROMOTIONS
FURTHER DEVELOPMENT AT HOB.

4.) What should the City of Ishpeming do to further RAMBA Goals?

CITY MARKETING E-BIKES STANCE
WAY FINDING

5.) What should the City of Ishpeming select as the top three priorities for recreational Improvement in the Five Year Plan?

- A. ALQUAAL TRAIL DEVELOPMENT
- B. INTER CITY TRAIL DEVELOPMENT - PAVED (DRAFT)
- C. MARKETING & STREET SIGNAGE

Any other Comments you have:

Name (optional): Danny Hill

2018 Community Recreation Plan

Focus Group—RAMBA

1.) What are the strengths of Community Recreation in Ishpeming?

- IDOT
- ALQUAAL
- HISTORIC AREA
- UNIQUE CHARACTER
- RAMBA TRAIL
- GROUP STRENGTH

2.) What are the weaknesses of Community Recreation in Ishpeming?

- INFRASTRUCTURE / SIGNAGE / DIRECTIONS
- LACK OF MULTIPLE TRAILHEADS
- MARKETING

3.) What Goals does RAMBA have for recreation in Ishpeming?

- SKIUS PARK @ HOB
- ALQUAAL TRAIL DEVELOPMENT

4.) What should the City of Ishpeming do to further RAMBA Goals?

- MAJOR ROAD SIGNS
- RECREATION MARKETING
- POSITIVE WORKING RELATIONSHIP
- EBIKE STANCE

5.) What should the City of Ishpeming select as the top three priorities for recreational Improvement in the Five Year Plan?

- A. ALQUAAL TRAIL DEVELOPMENT
- B. ALQUAAL TRAILHEAD
- C.

Any other Comments you have:

Name (optional): TYLER GAUTHIER |

2018 Community Recreation Plan

Results from LBADC Focus Group

The following individuals participated in this focus group: Pat Bureau, David Aeh, Joe Juidici, Mike Tonkin, Carol Fulsher, and Norm Andrews.

- 1.) What are the strengths of Community Recreation in Ishpeming?
 - a. Al Quaal
 - b. Cost of recreation here is low
 - c. Lots of recreational options
 - d. Baseball Complex is outstanding
 - e. Trails are terrific
 - f. Facilities are generally well maintained
- 2.) What are the weaknesses/opportunities of Community Recreation in Ishpeming?
 - a. Not enough money
 - b. Large areas of private land limit access to trails and other recreational opportunities
 - c. City parks have some worn out equipment
 - d. There is a need for new and different facilities
 - e. We lack soccer fields
- 3.) What Goals does LBADC have for recreation in Ishpeming?
 - a. Finish the Lake Bancroft Pavilion in an excellent manner
 - b. Create a boardwalk at Lake Bancroft
 - c. Improve and protect water quality at Lake Bancroft
 - d. Create a viable fish habitat and a fishing pier at Lake Bancroft
 - e. Establish better trail links and other amenities in the community
- 4.) What should the City of Ishpeming do to further LBADC Goals?
 - a. Increase funding in the budget for recreational facilities and programs
 - b. Engage residents in all aspects of recreation from planning to use
 - c. Increase cooperate with other agencies and local businesses
- 5.) What should the City of Ishpeming select as the top three priorities for recreational Improvement in the Five Year Plan?
 - A. Create a downtown park
 - B.

2018 Community Recreation Plan

Focus Group—LBADC

1.) What are the strengths of Community Recreation in Ishpeming?

All round ; low costs to users ; many options ; baseball / softball complex ; many trails

2.) What are the weaknesses of Community Recreation in Ishpeming?

Budget / \$; land access. Some parks have worn out facilities. Need for alternative facilities

3.) What Goals does LBADC have for recreation in Ishpeming? (Soccer) (Skate pk.)

Trailhead. Bike racks. Curbing to protect the water. Boardwalks

4.) What should the City of Ishpeming do to further LBADC Goals?

Engage residents, Budget. Cooperation w/ Council + businesses + Parks & Rec

5.) What should the City of Ishpeming select as the top three priorities for recreational Improvement in the Five Year Plan?

- A. Multipurpose park
- B. Sm local parks - improvement
- C. Tennis courts

Any other Comments you have:

City needs overall, cohesive, signage

Name (optional): Dan Allen

2018 Community Recreation Plan

Focus Group—LBADC

1.) What are the strengths of Community Recreation in Ishpeming?

lots of opportunities
at Quaal
trails, bike, walk, mtn bike, snowmobile, etc

2.) What are the weaknesses of Community Recreation in Ishpeming?

money

3.) What Goals does LBADC have for recreation in Ishpeming?

4.) What should the City of Ishpeming do to further LBADC Goals?

5.) What should the City of Ishpeming select as the top three priorities for recreational Improvement in the Five Year Plan?

- A. multi use downtown park w/ice rink, skate rink
- B. Continue trail building
- C. Lake Bandcroft Park improvement, trail next to lake, fishing, boating

Any other Comments you have:

Name (optional): _____

The Mining Journal

Upper Michigan's Largest Daily Newspaper

249 W. Washington St., P.O. Box 430, Marquette, Michigan 49855. Phone (906)228-2500. Fax (906)228-3273.

AFFIDAVIT OF PUBLICATION

STATE OF MICHIGAN

AFFIDAVIT OF PUBLICATION

For the County of **MARQUETTE**

In the matter of: Notice of Public Hearing
City of Ishpeming
Recreation Plan 2018-2022

Size: 2 x 4.5

State of **MICHIGAN**, County of Marquette ss.

JAMES A. REEVS

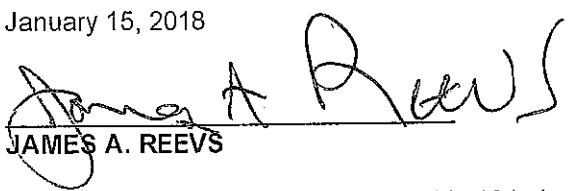
being duly sworn, says that he is

PUBLISHER

of **THE MINING JOURNAL**

a newspaper published and circulated in
said county and otherwise qualified
according to Supreme Court Rule; that
annexed hereto is a printed copy of a
notice which was published in said
newspaper on the following date, or
dates, to-wit

January 15, 2018


JAMES A. REEVS

Subscribed and sworn to before me this 18th day of January 2018.


HOLLY GASMAN

Notary Public for MARQUETTE County, Michigan
Acting in the County of Marquette
My commission expires: May 25, 2018

the agenda, but such encounters never are.

Chile's church earned wide respect during the regime of Gen. Augusto Pinochet because it spoke out against the military's human rights abuses, but it began a downward spiral in 2010 when victims of a charismatic, politically connected priest came forward with allegations that he had kissed and fondled them. Local church leaders had

ignored the complaints against the Rev. Fernando Karadima for years, but they were forced to open an official investigation after the victims went public and Chilean prosecutors started investigating. The Vatican in 2011 sentenced Karadima to a lifetime of "penance and prayer" for his crimes, but the church leadership hasn't won back Chileans' trust for having covered up Karadima's crimes for so long.

"The Karadima case created a ferocious wound," said Chile's ambassador to the Holy See, Mariano Fernandez Amunategui. He and others inside the Vatican speak openly of a Chilean church "in crisis" as a result, a remarkable admission of the toll the scandal has had on a church that wielded such political clout that it helped stave off laws legalizing divorce and abortion until recently.

Chileans' disenchantment has even affected their views of the pope himself. A recent

Press reported that Francis had told Chile's bishops that the Vatican was so concerned about the Karadima fallout that it had planned to ask Barros and two other Karadima-trained bishops to resign and take a year sabbatical.

But the plan fell through, and Francis went through with the appointment of Barros to Osorno, where the controversy has badly divided the diocese.

Full Selection

SPORTS RACK

315 W. Washington, Marquette
225-1766
www.SportsRackMIQT.com

Many local homes will be relying on wood heat this winter. If you will be offering any services involving wood heat, the Mining Journal Classified Department is offering you a special to advertise in the Service Directory.

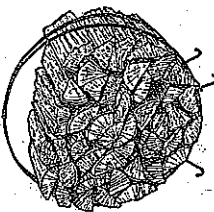
For only \$123 for the first month

Brand new customers get a

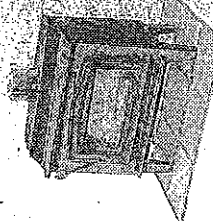
FREE 3x3 display valued at over \$200!

Do you offer any services such as wood cutting, hauling, stacking; or maybe you sell pre-cut wood? If so, this would be a great opportunity for you to advertise your services within our local community.

Deadline Tuesday @ 5pm. All ads in the Service Directory start on a Wednesday, includes up to 11 lines of text, runs for 28 consecutive days in the Mining Journal and 4 weeks in the Action Shopper. Add artwork or a logo for only \$39.00



To place your ad call the Classified Department at:
(906) 228-2500 or email
classifieds@miningjournal.net
Or stop in at our Marquette office.



THE MINING Journal

249 West
Washington St.
Marquette
228-2500

No one else even comes close.

www.miningjournal.net

CITY OF ISHPERING NOTICE OF 30 DAY PUBLIC REVIEW PERIOD AND

NOTICE OF PUBLIC HEARING

CITY OF ISHPERING RECREATION PLAN

For the next 30 days, the City of Ishpeming is seeking public input and comments regarding a draft City of Ishpeming Recreation Plan for 2018-2022. This plan is available for public review at Ishpeming City Hall, at the Carnegie Public Library, and at the Ishpeming Senior Center during normal working hours. It is also available on the City of Ishpeming website www.ishpemingcity.org.

The City Council will hold a Public Hearing on February 13, 2018 at 10:00 a.m. on this draft Recreation Plan at the City Hall Conference room, 100 E. Division Street, Ishpeming, Michigan.

You are welcome and encouraged to make public comment at the meeting or provide written comments regarding the draft Recreation Plan. Your written comments must be received prior to the end of the 30 day review period at the above address. All comments received will become part of the public record included in the final plan document.

Also, there will be a public meeting of the City Parks and Recreation Commission at 6:30 pm on Tuesday, January 16, 2018 at City Hall to discuss the draft Community Recreation Plan. People are invited and encouraged to participate in this public meeting to discuss the Community Recreation Plan.

City Manager

From: citymanager@mg.ishpemingcity.org on behalf of City Manager
<citymanager@mg.ishpemingcity.org>
Sent: Wednesday, January 31, 2018 11:10 AM
To: City Manager
Subject: Contact: dogs

Name

Lynda Sanders

Email

lynda66@chartermi.net

Subject

dogs

Message

How wonderful it would be if our city would establish a dog park! Many dogs will thank you!

It is so nice that mutt mitts have been put up along the Oak Street side of Lake Bancroft, thank you for that.



City Manager

To: L K
Subject: RE: Ice Rink

Lori,

Thank you for your reply. I will forward you comments to the City Council.

Mark Slown
City Manager
City of Ishpeming
100 E. Division Street
Ishpeming, MI 49849
906-485-1091, ext 204
citymanager@ishpemingcity.org

From: L K [mailto:write2me@rocketmail.com]
Sent: Wednesday, December 13, 2017 5:05 PM
To: City Manager <citymanager@ishpemingcity.org>
Subject: Re: Ice Rink

This is unfortunate. We were so looking forward to having a rink come back to Ishpeming, as it has been several years now since one has been here.

I think a lot of people would like an alternative to paying for the Negaunee rink (not everyone can afford to pay to skate every day) or having to drive to the Negaunee township rinks & MQT.

*We'd like to see a general use rink for the public & NOT just for 'hockey players' as most of the rinks seem to cater to.

I hope an outdoor rink will be something seriously considered for the future, because it's great idea to get people outdoors in the fresh air for exercise & fun.

*The space next to the mining museum is perfect size, with electricity nearby to hook up and hydrants for flooding.

Thank you for your time.

Lori Perry

On Wednesday, December 13, 2017, 9:30:40 AM EST, City Manager <citymanager@ishpemingcity.org> wrote:

Lori,

Thank you for your email question about an Ice Rink. I wish that I could tell you "Yes." Unfortunately, we currently do not have an ice rink in Ishpeming.

There is a concept plan to create one, but it has not been approved.

If you support the City creating an ice rink in the downtown area for general public use, please reply to this email and tell me your thoughts about this concept.

Thank you.

Mark Slown

City Manager

City of Ishpeming

100 E. Division Street

Ishpeming, MI 49849

906-485-1091, ext 204

citymanager@ishpemingcity.org

***Parks and Recreation Commission Proceedings of October 17, 2017
Ishpeming, Michigan***

The regular meeting of the Parks and Recreation Commission was held on Tuesday, October 17, 2017 at the Al Quaal Lodge. Chairperson Norman Andrew called the meeting to order at 6:30 p.m.

Present: Chairperson Norman Andrew, Commissioners David Morton, Edmund Holmgren, Angelo Bosio, Dale Thomas, and Dr. Stephen Piereson. Absent: Stacia Lynn, Carrie Meyer, Council Liaison Mike Tonkin. Also present were City Manager Mark Slown, DPW Director Jon Kangas, Assistant to the City Manager Cathy Smith, and Public Works Office Manager April Holm.

APPROVAL OF MINUTES

A motion was made by Commissioner Holmgren, supported by Commissioner Bosio and carried unanimously to approve the minutes of August 15, 2017 as presented.

PROPOSED 5 YEAR PLAN AMENDMENT

City Manager Mark Slown reported that he would like to make an amendment to the proposed 5 year plan. The update would include the fitness facilities improvement plan for the playgrounds. A grant could be submitted to help cover the costs. Director Jon Kangas pointed out if the tennis courts and playground were previously built with DNR Trust Fund dollars it was not likely that they would receive Trust Fund monies again. Discussion followed regarding the lease agreement with the school and the need for improvements at the playground.

A motion was made by Commissioner Bosio, supported by Commissioner Thomas and carried by a majority vote to make an amendment to the recreation plan to include the proposed Fitness Facilities Improvement Plan.

MALTON ROAD NON-MOTORIZED EXTENSION UPDATE

DPW Director Jon Kangas reported that the trail extension was almost complete. It had been shaped and graded, and was waiting for final cover. All the signs were up but boulders needed to be placed to keep vehicles from driving on the trail extension.

PROPOSED SKATE PARK UPDATE

City Manager Mark Slown reported the park is now considered a multi-purpose park which would include a skate park. The Committee was considering a DNR acquisition grant to cover the cost of acquiring the properties. A motion was made by Commissioner Thomas and supported by Commissioner Morton and carried unanimously to prioritize the acquisition of the downtown properties for the multiuse park in the recreation plan update.

LAKE BANKCROFT PARK UPDATE

DPW Director Jon Kangas reported that a modification was proposed to the plan for the pavilion to include individual bathroom facilities in order to maximize points for the grant. The impact for the additional facilities was a reduced storage area.

FILL SITES FOR CITY PARKS WATER IMPROVEMENT PROJECT

DPW Director Jon Kangas reported that A. Lindberg & Sons signed the fill agreements for the parking lot expansion at Al Quaal and addition of a T-Ball field at the playgrounds.

JON'S REPORT

DPW Director Jon Kangas reported drainage improvements were made at the playgrounds (fast pitch field); a grant was applied for through the WMCHF to finish improving the parking lot at the new trailhead. Parks staff finished clearing the cross country ski trails and they were currently getting ready for winter. He also introduced April Holm as the new DPW Office Manager.

OLD/NEW BUSINESS

Commissioner Morton requested the placement of a few more garbage can: In the vicinity of Carpet Specialists and the other by Lake Bankcroft near the Mutt Mitt station. He expressed lack of the cans would result in an increase of littering.

NEXT MEETING

The next meeting of the Parks and Recreation Commission will be on Tuesday, December 19, 2017 at 6:30 p.m.

ADJOURNMENT

At 7:32 p.m., a motion was made by Commissioner Bosio, supported by Commissioner Thomas and carried unanimously to adjourn.

Respectfully Submitted,

April Holm
Recording Secretary

***Parks and Recreation Commission Proceedings of December 19, 2017
Ishpeming, Michigan***

A meeting of the Parks and Recreation Commission was held on Tuesday, December 19, 2017 at the Al Quaal Lodge. Chairperson Norman Andrew called the meeting to order at 6:30 p.m.

Present: Chairperson Norman Andrew, Commission members David Morton, Angelo Bosio, Dale Thomas, Dr. Stephen Piereson, and Ishpeming Schools Representative Carrie Meyer. Also present were DPW Director Jon Kangas and Office Manager April Holm. Edmund Holmgren, Stacia Lynn, and Council Liaison Mike Tonkin were absent.

PUBLIC COMMENT

Bob and Cathy Dellangelo were present at the meeting to discuss potentially banning the use of snow bikes on the Al Quaal groomed ski trails. They expressed concern that the big tires were creating hazardous ski conditions. There was a discussion regarding snow bike usage and that they have their own groomed trails.

A motion was made by Angelo Bosio to ban snow bikes from the ski trails at Al Quaal. The motion was supported by Carrie Meyer and unanimously approved.

APPROVAL OF MINUTES (October 17, 2017)

A motion was made by Angelo Bosio with support from David Morton to approve the October 17, 2017 minutes as presented. The motion carried.

TRAIL GATES

There was a discussion about having trail gates put in at the Deer Lake Trails to prevent motorized vehicles from entering the trails. A drawing of the proposed gates was presented and The Deer Lake Authority would be willing to pay for the gates.

A motion was made by Stephen Piereson and supported by David Morton to accept the drawing and installation of the gates as long as the funding is provided. The motion was unanimously approved.

COMMUNITY RECREATION PLAN

City Manager Mark Slown discussed some of the changes to the proposed plan. He also presented the board with a survey that he would like to send out to all of the City residents to get their feedback on the parks and what changes they would like to see. A special public meeting was scheduled for Tuesday, January 19th at City Hall to discuss all of the proposed changes. No further action was taken.

FEE SCHEDULE

DPW Director Jon Kangas asked the board to consider increasing the park and recreation fees especially for the tube slide rentals. He would like to discuss the issue in greater detail at the next meeting scheduled for February 20, 2018. There was also a discussion regarding if we should be charging senior rates because they are currently not in the fee structure.

A motion was made by Angelo Bosio and supported by Dale Thomas to use the fee structure as is with no senior rates being charged. The motion was unanimously approved.

Jon's Report

DPW Director Jon Kangas reported that Thursday, December 14th was Jay Wilder's last day. He wanted everyone to know that Tim Dellangelo is Jay's replacement and is getting acquainted with the gator and other grooming equipment. We are trying to make the transition as smooth as possible. Jon also informed

everyone that this was possibly going to be his last meeting because he was potentially going to be taking another position closer to home.

OLD/NEW BUSINESS

Norman Andrew wanted to discuss the progress that was being made on the pavilion project and was happy to hear that it is moving forward but there have been a few delays. City Manager Mark Slown was hopeful that he would have a better update at the next meeting that is scheduled for February

ADJOURNMENT

A motion was made by Dale Thomas, with support from David Morton to adjourn the meeting. The motion carried and the meeting adjourned at 7:52 p.m.

Respectfully submitted,

April Holm
Recording Secretary

***Parks and Recreation Commission Proceedings of January 16, 2018
Ishpeming, Michigan***

A special meeting of the Parks and Recreation Commission was held on Tuesday, January 16, 2017 at the Al Quaal Lodge. Chairperson Norman Andrew called the meeting to order at 6:30 p.m.

Present: Chairperson Norman Andrew, Commission members Edmund Holmgren, Dale Thomas, Dr. Stephen Piereson, and Ishpeming Schools Representative Carrie Meyer. Also present were Interim DPW Director Carl Petersen and Office Manager April Holm. David Morton, Angelo Bosio, Stacia Lynn, and Council Liaison Mike Tonkin were absent.

PUBLIC COMMENT

No comments

COMMUNITY RECREATION PLAN

Everyone reviewed the community recreation plan. Under the inventory we need to remove the basketball courts at the high school and the toboggan hill that is at Al Quaal. Mark Slown will remove those items before finalizing the plan. A 30 day notice was put in the Mining Journal so that we are able to receive public review period and receive input from our city residents.

Stephen Piereson made a motion to approve the 5 year Recreation Plan as presented with support from Dale Thomas. The majority approved the motion.

SCHOOL LEASE AGREEMENT

Mark Slown and Carrie Meyer are in the process of working with Ishpeming Public Schools regarding making necessary changes to the existing lease agreement. Potentially putting a use and maintenance agreement in place for the tennis courts. No action needed.

SURVEYS

The City of Ishpeming is in the process of putting together a survey that will be sent to all of the city residents so that we are able to use the information to see what improvements or changes the residents would like to see regarding our parks and recreation. No action needed.

FOCUS GROUP

Mark Slown is in the process of trying to put together a couple of focus groups to review the recreation plan. No action needed.

ADJOURNMENT

A motion was made by Edmund Holmgren, with support from Dale Thomas to adjourn the meeting. The motion carried and the meeting adjourned at 7:45 p.m.

Respectfully submitted,

April Holm

Ishpeming Planning Commission
Meeting Minutes for January 08, 2018
(**Agenda items are in bold text**)
6:30 P.M. @ Ishpeming City Hall

A. Call to Order for the Ishpeming Planning Commission was by Acting Chairperson Bruce Houghton at 6:34 P.M.

B. Roll Call

Present: Planning Commissioners Angelo Bosio, Larry Bussone, Bruce Houghton, Mike Tonkin, Diane Gauthier and Brooke Routhier.

Absent: Jim Bertucci as well as Gabe Seelen and Harry Weikel, whose absences were both excused in advance.

Public present: Mark Slown and Al Pierce, Zoning Administrator.

C. Public Comment: none

D. Approval of Agenda and Election of Chairperson – The Agenda was approved unanimously as presented upon a motion by Angelo Bosio supported by Larry Bussone. A motion by Angelo Bosio supported by Larry Bussone that Gabe Seelen continue as Chairperson also passed unanimously.

E. Approval of Previous Meeting Minutes –The meeting minutes of December 04, 2017 were approved unanimously as presented upon a motion by Larry Bussone supported by Brooke Routhier.

F. Presentations – none.

G. Public Hearings – none.

H. New Business

1. Review of City of Ishpeming Proposed 2018-2022 Five Year Recreation Plan

Mark explained that in addition to the Planning Commissions review, the proposed plan would also undergo a 30 day Public Comment period and a Focus Group Session as the MDNR requires the Recreation Plan to be brought to multiple venues. He indicated that the biggest addition in this plan is Ishpeming Schools proposed athletic facilities. The existing deteriorating 7 Tennis Courts would be replaced by 8 new Tennis Courts in a slightly different configuration with more off-street parking. The existing trail in the area would be improved and an all sports Athletic Hall of Fame Trail constructed. Ishpeming Schools will also be conducting a fundraiser to assist with facility improvements. Additionally the Ishpeming City Council is supporting the purchase of a multi-purpose park (Ice skating, Roller skating, Skateboarding) in the downtown area. This may involve environmental investigation and probably obtaining an independent appraisal. A resolution of support from the Planning Commission would be beneficial to support the Grant request. The Planning Commission reviewed the 2018-2022 Recreation Plan.

A motion by Mike Tonkin supported by Diane Gauthier to support the Goals and Objectives of the Preliminary 2018-2022 Recreation Plan passed unanimously.

2. PC review of: Proposed Revised Section 15.5 CBD Facades

Al presented revisions and comments to this proposed addition to the CBD. Composite wood siding now can be utilized after Conditional Use approval by the Planning Commission. Placing buildings lot-line to lot-line requires side yard setback revisions in the CBD and fireproof sidewalls. He has checked several sites for Canvas Awnings for winter usage. All sites recommended taking the awnings down for the winter season. Prohibiting Pole Signs requires amending the Sign Ordinance. Mike expressed favorable sentiments towards retaining Pole Signs, but building placement on the lot lines would require a variance to place them in the Right-of-Ways. Brooke asked Mark to expand upon his vision for the CBD. Mark stated that the goal is to establish a period look with classic materials and attention to architectural details. The "period" experience will create continuity and add a historical aspect to renovations. Done properly, it can become a destination spot for shopping and dining.

Brooke Routhier made a motion supported by Larry Bussone, that Section 15.5, as amended, be added to the Zoning Ordinance. The motion passed unanimously.

3. Proposed 2018 Planning Commission Meeting Schedule

The 2018 meeting schedule is proposed to continue meeting on the first Monday of the month at 6:30 P.M. If the date is impacted by a holiday, the meeting will shift to the second Monday. The 2018 dates are Jan. 08, Feb. 05, Mar. 05, Apr. 02, May 07, June 04, July 09, Aug. 06, Sept 10, Oct. 01, Nov. 05, Dec. 03 and Jan. 07, 2019. As usual, if there is no pressing business the July meeting will be cancelled..

Angelo Bosio made a motion supported by Diane Gauthier to accept the dates as presented. The motion passed unanimously.

4. Iron Ore Heritage Trail (IOHT) Five Year Plan 2018-2022

The Planning Commission reviewed the Plan, especially the Goals on pages 11-14 and the Action Plan on page 15. Several comments were made regarding the usage of the trail and the proposed lighting of the trail between Ishpeming and Negaunee.

Upon a motion by Angelo Bosio supported by Larry Bussone, Commissioners unanimously supported the six (6) listed Goals and Objectives as well as the Action Plan. Al will inform IOHT of the Planning Commissions actions with a letter of support.

5. Informational Mining Journal Article on Zoning Changes in Marquette Township

A clipping from the December 27, 2017 Mining Journal was included in the packet. Of interest to commissioners was the information on tiny homes, 450 square feet or less. Brooke asked that this be placed on a future agenda for discussion and potential inclusion into the zoning ordinance. Al expressed interest in the definitions for shipping containers as they have caused some problems in Ishpeming. At some point they will be added to a future agenda.

I. Old Business

1. Revised Zoning Ordinance Sections sent to CUPPAD

A self-explanatory update of progress to date. As of December 11, 2017 the entire revised ordinance has been furnished to CUPPAD.

2. Zoning Ordinance Sub-Committee Review

Next meeting is planned for January 31, 2018 at 4:00 P.M.


J. Correspondence

1. Planning Commission Annual Report Template

Al has filled out the forms for an initial Planning Commission Annual Report. Since it is not yet typed, he verbally informed Commissioners of the contents and will provide a copy of the report for the next meeting.

K. Meeting Adjournment was unanimous upon a motion by Angelo Bosio supported by Larry Bussone at 7:45 P.M.

By:



Alan K. Pierce, Zoning Administrator

The Regular Meeting of the Ishpeming City Council was held on Wednesday, January 10, 2018 in the Ishpeming City Hall Conference Room. Mayor Joseph Juidici called the meeting to order at 7:00 p.m.

ROLL CALL

Present: Mayor Joseph Juidici, Council Members Karl Lehmann, Stuart Skauge, and Mike Tonkin (4). Absent: Councilman Justin Koski (1). Also present were City Manager Mark Slown and City Attorney Bonnie Hoff.

A motion was made by Mayor Juidici, supported by Councilman Skauge and carried unanimously to excuse Councilman Justin Koski.

PUBLIC COMMENT - There was none.

APPROVAL OF AGENDA

Manager Slown requested the purchase of tasers be added under New Business. A motion was made by Councilman Lehmann, supported by Councilman Tonkin and carried unanimously to approve the agenda incorporating the above addition.

AGENDA COMMENT - There was none.

CONSENT AGENDA

- a. Minutes of Previous Meeting (December 6th and 18th and Closed Session December 6th)
- b. Approval of Disbursements
- c. Confirm appointment of Christine Moffatt to fill a vacancy on the Cemetery Board
- d. Confirm SCI Cleaning of Fire Department
- e. Special Event Application: Polar Roll: February 27, 2018
- f. Special Event Application: Ishpeming Ski Club Jr. National Qualifier: February 3 and 4, 2018
- g. Special Event Application: Noquemanon Ski Marathon: January 27, 2018
- h. Confirm Financial Support Payment for UPSET for 2018 - \$10,000
- i. Confirm Financial Support Payment for COA-Senior Citizen Program for 2018 - \$9,000
- j. Special Event Application: RAMBA/UPCROSS: January 21, 2018

Councilman Lehman asked that item 7i be pulled from the consent agenda for discussion. He suggested the name for the financial support should be consistent with the budget line item which would be Commission on Aging/Senior Citizen Program.

A motion was made by Councilman Skauge, supported by Councilman Lehmann and carried unanimously for the financial support for Commission on Aging be consistent with the budget line item title.

A motion was made by Councilman Lehmann, supported by Councilman Tonkin and carried unanimously to approve the consent agenda items with the amendment to the title of item 7i.

MONTHLY FINANCIAL STATEMENT REPORT

Finance Director Jim Lampman reviewed the financial statements for the period ending December 31, 2017 which included the General Fund, Garbage Fund, Public Improvement Fund, and Water and Sewer Funds. It was the consensus of Council to file the financial statements.

PUBLIC HEARING FOR SYMONS BUILDING

Mayor Juidici opened the public hearing at 7:05 p.m. Attorney Hoff explained this was a historical issue. Since there was not an Economic Development Commission currently established, the City would need to sign off on the property so there was clear title. No money was owed to the EDC. Mayor Juidici closed the public hearing at 7:16 p.m.

CONFIRM 2018 CAPITAL IMPROVEMENT PLAN

There was discussion on the Capital Improvement Plan process and it was felt the Lake Bancroft Area Pavilion project should be moved from the 2019 Capital Improvement Project Plan to the 2018 Capital Improvement Project Plan.

A motion was made by Councilman Lehmann, supported by Councilman Skaug and carried unanimously to approve the 2018 Capital Improvement Plan incorporating the change of moving the Lake Bancroft Area Pavilion to be completed in 2018 instead of 2019.

RURAL DEVELOPMENT – WATER SYSTEM IMPROVEMENT PROJECT DRAW SEVEN

A motion was made by Councilman Skaug, supported by Councilman Lehmann and carried unanimously to approve the Rural Development Draw Seven in the amount of \$29,471.03 for A. Lindberg and Sons and \$24,771.75 for GEI Consultants.

ENGINEERING AUTHORIZATION FOR THE LAKE BANCROFT PAVILION PROJECT

A motion was made by Councilman Skaug, supported by Councilman Lehmann and carried unanimously to authorize GEI Consultants to begin with engineering for the Lake Bancroft Pavilion Project prior to the actual signing of the grant.

Councilman Lehmann expressed concern with the grant not actually being signed by the State before work would begin. Councilman Tonkin questioned and there was discussion as to what was include in the engineering costs and the proposed design concepts for the Pavilion.

TENNIS COURT PROJECT

There was discussion regarding the Tennis Court Improvement Project for the Ishpeming School District. The School would reimburse the \$500 cost for the preliminary work for the grant application for GEI Consultants to the City. There was discussion among Council regarding the ownership of the property and the lease agreement with the School. Councilman Skaug expressed concern over the 2006 Sinking Fund Millage that was used for improvements at the playgrounds and the legal issues that could be involved with ownership of the property and the Sinking Fund Millage.

A motion was made by Councilman Skaug, supported by Councilman Lehmann and carried unanimously to table this item for further review of property issues by the School District.

LETTER OF AGREEMENT WITH AFSCME DPW EMPLOYEES CHAPTER – INTERIM DPW DIRECTOR

A motion was made by Councilman Skaug, supported by Mayor Juidici and carried unanimously to approve the Letter of Agreement with AFSCME DPW Employees Chapter pertaining to the Interim DPW Director position on a temporary basis.

LIFT HIRING FREEZE

A motion was made by Councilman Lehmann, supported by Councilman Skaug and carried unanimously to lift hiring freeze for the replacement of the part-time Library Clerk and the full-time DPW Director.

DESIGNATE PUBLISHING ORGAN FOR 2018 – MINING JOURNAL

A motion was made by Councilman Skaug, supported by Mayor Juidici and carried unanimously to designate the Mining Journal as the publishing organ for 2018.

DESIGNATE BANK DEPOSITORIES FOR 2018

Finance Director James Lampman advised Northern Bank and Trust was now First Bank so that should be corrected on the agenda.

A motion was made by Councilman Skaug, supported by Councilman Lehmann and carried unanimously to designate m-Bank, Wells Fargo, TruNorth Federal Credit Union, and First Bank as the depositories for 2018.

ESTABLISH CHAIN OF COMMAND IN ABSENCE OF CITY MANAGER

A motion was made by Councilman Lehmann, supported by Councilman Skauge and carried unanimously to establish the Chain of Command in the absence of the City Manager as (1) James Lampman, Finance Director; (2) Steve Snowaert, Chief of Police; and (3) Cathy Smith, Assistant to the City Manager.

ESTABLISH COMMITTEE TO REVIEW ENERGY EFFICIENCIES

A motion was made by Councilman Skauge, supported by Councilman Lehmann and carried unanimously to appoint the committee as suggested by the City Manager to include one or two Council members, Finance Director, City Manager, DPW Director, a representative from UPPCO and one or two citizen volunteers.

Council Members Skauge and Lehmann volunteered for the Energy Efficiencies Review Committee.

SET PUBLIC HEARING FOR 5 YEAR RECREATION PLAN UPDATE 2018-2022

SET SPECIAL MEETING FOR COUNCIL RULES AND PROCEDURES WORKSHOP

It was the consensus of Council to hold a special meeting for the Recreation Plan Public Hearing and to review the draft Council Rules on February 13, 2018 at 10:00 a.m.

APPROVE THE PARKS AND RECREATION SURVEY

Councilman Skauge suggested a question regarding "no smoking in public parks" be added; and add boxes to the list of recreation sites on question number two.

A motion was made by Councilman Lehmann, supported by Councilman Skauge and carried unanimously to approve the recreation survey with the above changes and send it out.

LIBRARY FRONT ENTRY REPAIRS

There was discussion on the repairs done to the front entry of the Library and what portion of the remaining bill should be paid. Councilman Tonkin felt a portion should be retained due to the problems with the color match; and the Library Board was not happy with the outcome; however, he felt the contractor should receive a partial payment.

A motion was made by Councilman Skauge, supported by Councilman Lehmann and carried unanimously to make a partial payment to the contractor but retain \$3,000 until the corrections have been made and are acceptable.

OLD BUSINESS - There was none.

NEW BUSINESS

Chief Snowaert explained the price for the purchase of tasers was \$9,345 and this price was only good until January 31st. In addition, the Police Department would apply for a RAP grant for \$500 per taser which would be a reimbursement of \$2,500. Manager Slown recommended waiving competitive bidding because Axon was the only company that supplied tasers to law enforcement.

A motion was made by Councilman Lehmann, supported by Councilman Skauge and carried unanimously to approve the purchase of tasers and on the recommendation of the City Manager waive competitive bidding.

There was discussion on the upcoming Annual Suicide Hill Ski Tournament and the parking situation on the entry road. Chief Snowaert advised they would be providing "no parking signs" but reminded everyone the road was in Negaunee not Ishpeming; however, they would provide support for the event with no overtime involved.

Councilman Lehmann thanked Manager Slown for obtaining the financial information he had request for the Iron Ore Heritage Trail.

MAYOR AND COUNCIL REPORTS

Councilman Tonkin attended the joint meeting with the DDA and Planning Commission with Jessica Flores presenting; attended the Planning Commission meeting; and discussed the State of Michigan not allocating dollars for road repairs and snowplowing.

Councilman Lehmann thanked Jon Kangas for his service to the City of Ishpeming and wished him the best with his new job opportunity.

Mayor Juidici thanked Carl Petersen for stepping up as the Interim DPW Director and taking on the additional responsibility.

Councilman Skauge thanked Jon Kangas for his service to the City and wished him the best in his new job; expressed concern over creating a historical district in the downtown; and was concerned with the ambulance coverage in Ishpeming and surrounding areas with recent changes at the hospital. He requested Alyson Sundberg, UP Health Systems, attend a Council meeting in the future to discuss.

MANAGER'S REPORT

Manager Slown would provide a written report to Council; and advised staff would be meeting to discuss concerns with the recent structure fires that had occurred in the City.

ATTORNEY'S REPORT

Attorney Hoff reported she continued to work on past and current projects; wished Jon Kangas well in his position; and welcomed Carl Petersen as the Interim DPW Director.

CLOSED SESSION

Councilman Skauge felt there was no need to go into closed session and would not vote in favor of it. Attorney Hoff explained for this exemption the public body would need four votes to go into closed session.

A motion was made by Councilman Tonkin and supported by Mayor Juidici to go into closed session pursuant to MCL 15.268(h) at 8:32 p.m. Ayes: Mayor Juidici, Council Members Lehmann and Tonkin (3). Nays: Councilman Skauge (1). Absent: Councilman Koski (1). Motion failed.

There was debate regarding the vacant DPW Director position and what the desirable qualifications for the position should be. Councilman Skauge felt the Director position should remain in the Supervisor's Union; and would also like to keep the engineer requirement. After discussion, it was felt the advertisement should state engineering preferred but not required the position should remain in the union; and require an S-2 Water License.

In addition, Manager Slown asked for clarification on the procedure to follow in the hiring of the DPW Director and what involvement Council would like to have. There was discussion on possible procedures.

ADJOURNMENT

At 8:52 p.m., a motion was made by Councilman Skauge, supported by Councilman Lehmann and carried unanimously to adjourn.

Respectfully Submitted,

Cathy Smith
Recording Secretary

The Special Meeting of the Ishpeming City Council was held on Tuesday, February 13, 2018 in the Ishpeming City Hall Conference Room. Mayor Joseph Juidici called the meeting to order at 10:00 a.m.

Present: Mayor Joseph Juidici, Council Members, Karl Lehmann, Stuart Skauge, and Mike Tonkin (4).
Absent: Councilman Justin Koski (1). Also present was City Manager Mark Slown and City Attorney Bonnie Hoff.

AGENDA COMMENT – There was none.

PUBLIC HEARING FOR 2018-2022 RECREATION PLAN

Mayor Juidici opened the public hearing at 10:02 a.m. Manager Slown advised there was a lot of good public input from the Recreation Survey.

Carrie Meyers, Ishpeming Schools Superintendent, thanked the Council for including the Tennis Court project in the 2018-2022 Recreation Plan as a top priority. She advised the District has no funds to put towards the project and the Capital Campaign Committee was committed to raising the funds need in conjunction with a DNR grant.

Councilman Skauge suggested the School make the playground facilities available to the general public. He further questioned if the issue of the lease and the bond had been resolved. High School Superintendent Meyers advised the tennis courts and the parking lot would be taken out of the lease agreement and a new maintenance and use agreement would be established; and she noted they had check with the School attorney regarding the bond issue but would further check with the Department of Treasury.

Ray Leverton advised the proposed plan was to have eight new tennis courts constructed at the playgrounds and the two up at Birchview School would be renovated.

Mayor Juidici closed the public hearing at 10:16 a.m.

RESOLUTION OF ADOPTION 2018-2022 RECREATION PLAN

Councilman Skauge suggested the Cliff's Shaft Mining Museum and the Crossbridge Church be added to the list of recreation facilities; include the pavilion under Lake Bancroft; add a note that the school has a lease with the City for the Playgrounds; and in the Action Program Table specify what the year means.

A motion was made by Councilman Lehmann, supported by Councilman Tonkin and carried unanimously to approve Resolution #2-2018 to approve the 2018-2022 Recreation Plan.

CITY COUNCIL RULES OF PROCEDURE WORKSHOP

There was discussion among staff and Council regarding the draft Rules of Procedure. During discussion it was suggested the agenda distribution date be changed from the Friday before the meeting to Thursday before the meeting; under the Public Participation section (A)(2), the sentence regarding time allotted for agenda public comment should be struck out; and add page numbers to the document. Staff would make corrections and provide a copy to Council.

ADJOURNMENT

At 11:25 a.m., a motion was made by Councilman Lehmann, supported by Councilman Skauge and carried unanimously to adjourn.

Respectfully submitted,

A handwritten signature in blue ink, appearing to read "Cathy Smith", written in a cursive style.

Cathy Smith
Recording Secretary

**APPENDIX G
RESOLUTION OF ADOPTION**

ISHPEMING PUBLIC SCHOOL DISTRICT NO. 1

319 EAST DIVISION STREET
ISHPEMING, MICHIGAN 49849

Carrie A. Meyer
Superintendent of Schools
Phone: (906) 485-5501

Anthony J. Bertucci
Director of Business Services
Fax: (906) 485-1422

February 20, 2018

Mr. Mark Slown
City Manager/City Clerk
City of Ishpeming
100 East Division Street
Ishpeming, MI 49849

Dear Mr. Slown:

Please be advised that on Monday, February 19, 2018, the Ishpeming Public School District Board of Education acted to adopt the Support for the 2018-2022 Community Recreation Plan Resolution.

The appropriate Board resolution is enclosed for your use.

Should you have any questions, please contact me.

Sincerely,



Carrie Meyer
Superintendent

Enc.

CITY OF ISHPEMING
FEB 22 2018
RECEIVED

RESOLUTION

Ishpeming Public School District #1 Board of Education Support for the 2018-2022 Community Recreation Plan

Whereas, the City of Ishpeming has undertaken a planning process to determine the recreational and natural resource conservation needs and desires of its residents during a five year period covering the years 2018 through 2022; and

Whereas, the School Board for Ishpeming Public School District No. 1 has a vested interest in community recreation in the City of Ishpeming; and

Whereas, the School Board for Ishpeming Public School District No. 1 has reviewed the proposed 2018 to 2022 Community Recreation Plan; and

Whereas, the City of Ishpeming Parks and Recreation Commission, Planning Commission, and City Council have approved the plan; and

Whereas, residents of the City of Ishpeming were provided with a well-advertised opportunity during the development of the draft plan to express opinions, ask questions, and discuss all aspects of the community recreation and natural resource plan; and

Whereas, the public was given a well-advertised opportunity and reasonable accommodations to review the final draft plan for a period of 30 days (from January 15, 2018 to February 13, 2018); and

Whereas, three advertised public meetings were conducted and posted with the agenda subject of "Community Recreation Plan" on three separate dates and a public hearing was held on February 13, 2018 at City Hall to provide an opportunity for all residents of the City of Ishpeming to express opinions, ask questions, and discuss all aspects of the 2018 to 2022 Community Recreation Plan; and

Whereas, the community of the City of Ishpeming has developed this plan as a guideline for improving recreation and enhancing natural resource conservation for the City of Ishpeming; and

Whereas, after the public hearing, the City Council of the City of Ishpeming voted to adopt the 2018 to 2022 Community Recreation Plan.

Now, therefore be it resolved the Board of Education for Ishpeming Public School District No. 1 hereby supports the Ishpeming 2018 to 2022 Community Recreation Plan.

Present: Robert Nadeau, Todd Kauppinen, Paul Olson, Joseph Routhier, Tina Romback,
Scott Lyman

Absent: Paul Healey

Ayes: 6

Nays: 0

Abstain: 0

Motion declared: Adopted.


Secretary, Board of Education

The undersigned duly qualified and acting Secretary of the Board of Education of Ishpeming Public School District No. 1, Marquette County, Michigan, hereby certifies that the foregoing constitutes a true and complete copy of a resolution adopted by the Board at a regular meeting held on February 19, 2018, the original of which is part of the Board's minutes. The undersigned further certifies that notice of the meeting was given to the public pursuant to the provisions of the "Open Meetings Act" (Act 267, Public Acts of Michigan, 1976, as amended).


Secretary, Board of Education

APPENDIX H

LETTERS OF TRANSMITTAL TO COUNTY AND REGION



CITY OF ISHPEMING, MICHIGAN

100 East Division Street • Ishpeming, Michigan 49849

| | | | | | |
|---------------|----------|------------------|----------|------------------|----------|
| City Manager | 485-1091 | Police | 486-4416 | Assessor | 485-1091 |
| City Clerk | 485-1091 | Rental Inspector | 485-1091 | Library | 486-4381 |
| Treasurer | 485-1091 | Fire | 486-4426 | Cemetery / Parks | 486-6181 |
| City Attorney | 485-1091 | Public Works | 486-9371 | Fax | 485-6246 |

Central Upper Peninsula Planning and Development Regional Commission (CUPPAD)

Attn: Dotty LaJoye, Executive Director

2415 14th Avenue South

Escanaba, MI 49829

February 22, 2018.

Dear Ms. LaJoye,

Please accept this letter of transmittal with the attached copy of the City of Ishpeming Five-Year Community Recreation Plan (2018-2022).

This plan was adopted by the City Council on February 13, 2018 and has wide-spread support in the community. It is my firm belief that this plan is fully aligned with CUPPAD's regional goals.

If you have any questions or comments, please let me know.

On behalf of the City of Ishpeming, thank you for the regional planning and many other services which CUPPAD provides.

Sincerely,


Mark Slown
City Manager



*The City of Ishpeming is an equal opportunity program/employer.
Auxiliary aids and service are available upon request to individuals with disabilities.*

HOME OF THE U.S. SKI AND SNOWBOARD HALL OF FAME



CITY OF ISHPEMING, MICHIGAN

100 East Division Street • Ishpeming, Michigan 49849

| | | | | | |
|---------------|----------|------------------|----------|------------------|----------|
| City Manager | 485-1091 | Police | 486-4416 | Assessor | 485-1091 |
| City Clerk | 485-1091 | Rental Inspector | 485-1091 | Library | 486-4381 |
| Treasurer | 485-1091 | Fire | 486-4426 | Cemetery / Parks | 486-6181 |
| City Attorney | 485-1091 | Public Works | 486-9371 | Fax | 485-6246 |

Marquette County
Attn: Eric Anderson, Planning Manager
234 W. Baraga Avenue
Marquette, MI 49855

February 22, 2018

Dear Mr. Anderson,

Please accept this letter of transmittal with the attached copy of the City of Ishpeming Five-Year Community Recreation Plan (2018-2022).

This plan was adopted by the City Council on February 13, 2018 and has wide-spread support in the community. It is my firm belief that this plan is fully aligned with Marquette County's Master Plan.

If you have any questions or comments, please let me know.

On behalf of the City of Ishpeming, thank you for the County planning and many other services which your office provides.

Sincerely,


Mark Slown
City Manager



*The City of Ishpeming is an equal opportunity program/employer.
Auxiliary aids and service are available upon request to individuals with disabilities.*

HOME OF THE U.S. SKI AND SNOWBOARD HALL OF FAME

**APPENDIX I
CONCEPTUAL SITE PLANS**

Conceptual site Plans include the following:

- **Tennis Court Project**
- **Trail Connector Project**

Ishpeming Rec. Area

Write a description for your map.

Legend

 Old Playgrounds (awesome!)



Possible Trail Connector Route

